



PART MANUAL - 51240
REV. C

Revised: 5/02

AUTOLOADER KIT FOR CRAFCO EZ-POUR AND SUPER SHOT MELTERS



AUTOLOADER KIT FOR CRAFTCO EZ-POUR AND SUPER SHOT MELTERS

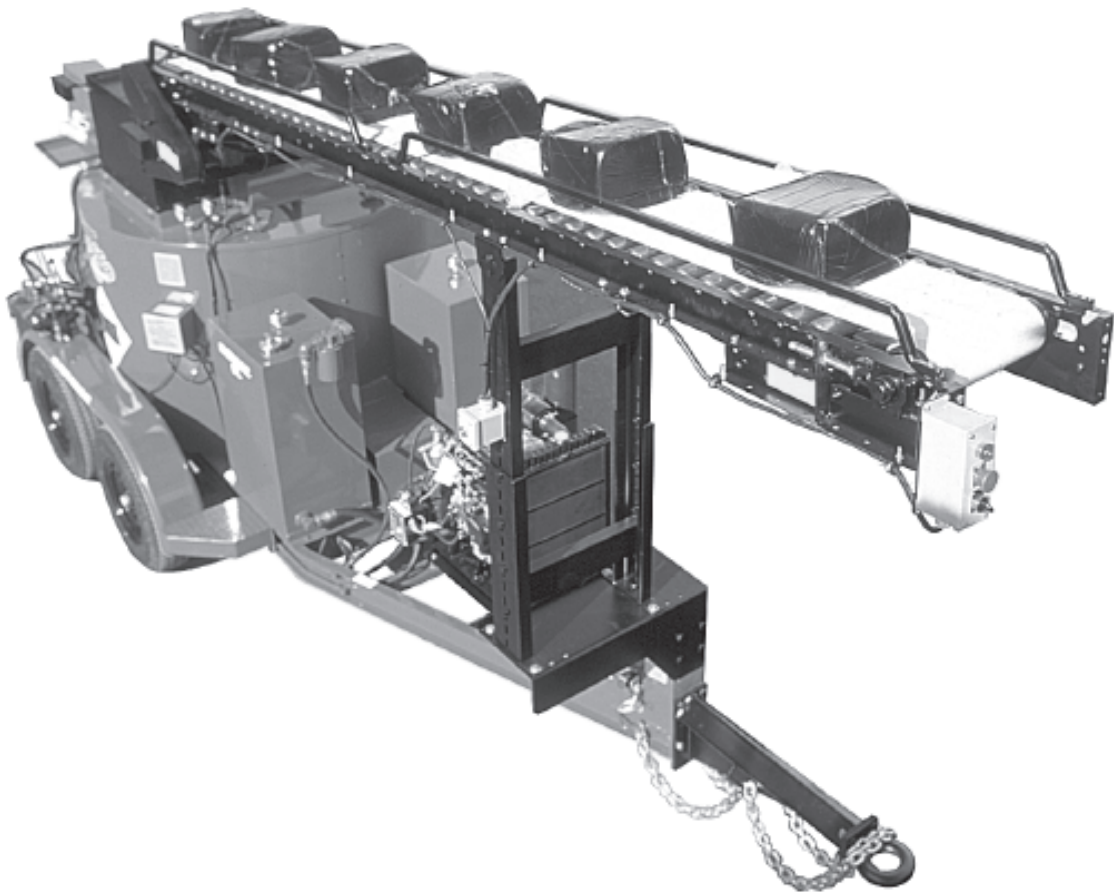


TABLE OF CONTENTS

Autoloader Kit Operating Manual.....	6-7
Autoloader List.....	8
Safety Precautions.....	9-11
Limited Warranty.....	12
Warranty Claim Instructions.....	13
Specifications.....	14
Introduction.....	15
Operating Instructions	
Operational Precautions.....	16-17
Autoloader Start Up.....	18
Shut Down & Clean Out Procedure.....	19
Storing Machine/Instructions for Ordering Parts.....	20
Trouble Shooting	
Trouble Shooting Chart.....	21
Maintenance	
Service & Maintenance Instructions.....	21
Maintenance Chart.....	22
Engineering Application Data-Belt Tracking.....	23
Belt Tracking Diagram.....	24
Parts	
Small Splash Box Assembly--EZ 100, SS125-Part Number 51290 Diagram & Parts.....	25-27
Conveyor Assembly--All Units-Part Number 51110.....	28-30
Hydraulic and Electrical Schematic.....	31
Super Shot Closed Center Electric Schematic-Part Number 26678.....	32-33
Super Shot Open Center Electric Schematic-Part Number 26694.....	34-35
EZ Pour 100DC, 200D, & 200DC Melter-Electric Schematic-Part Number 26681.....	36-37
EZ Pour 400 Diesel Melter-Electric Schematic-Part Number 26682.....	38-39
Super Shot 125 Hydraulic Schematic-Part Number 26679.....	40-41
Super Shot 125 Compressor-Hydraulic Schematic-Part Number 26684.....	42-43
Super Shot 250-Hydraulic Schematic-Part Number 26693.....	44-45
EZ Pour 100DC & 200DC-Hydraulic Schematic-Part Number 26680.....	46-47
EZ Pour 400 Melter-Hydraulic Schematic-Part Number 26683.....	48-49
Super Shot 125 (43600)-Part Number 51210.....	50-52
Super Shot 125 Conveyor Kit (43600)-Part Number 51210.....	53-54
Super Shot 125 Compressor (43800) Conveyor Kit -Part Number 51177.....	55-57
Super Shot 125 Compressor (43800) Conveyor Kit-Part Number 51177 (Top View).....	58-59
Super Shot 250 (44100) Conveyor Kit -Part Number 51225.....	60-62
Super Shot 250 (44100) Conveyor Kit -Part Number 51225 (Top View).....	63-64
EZ Pour 100 Diesel Compressor (42600)-Part Number 51205.....	65-67
EZ Pour 100 Diesel Compressor (42600)-Part Number 51205 (Top View).....	68-69
EZ Pour 100 Diesel (41800) Conveyor Kit-Part Number 51100.....	70-72
EZ Pour 200 Diesel (41800)-Part Number 51100 (Top View).....	73-74
EZ Pour 200 Diesel Compressor-Part Number 51176.....	75-77
EZ Pour 200 Diesel Compressor (43050)-Part Number 51176 (Top View).....	78-79
EZ Pour 400 without Engine Cover Conveyor Kit -Part Number 51175-Old Style.....	80-82
EZ Pour 400 without Engine Cover-Part Number 51175-Old Style (Top View).....	83-84
EZ Pour 400 with Engine Cover-Part Number 51220-Old Style.....	85-87
EZ Pour 400 with Engine Cover-Part Number 51220-Old Style (Top View).....	88-89
EZ Pour 400 with Engine Cover-Part Number 51250-New Style.....	90-92
EZ Pour 400 with Engine Cover-Part Number 51250-New Style (Top View).....	93-94
EZ Pour 200 Diesel (41800)--Gravity Feed--Conveyor Kit-Part Number 51195.....	95-96
EZ Pour 200 Diesel (41800)--Gravity Feed--Conveyor Kit-Part Number 51196.....	97-98

AUTOLOADER KIT OPERATING MANUAL



CAUTION:

Read the Operations Manual. Learn to operate this machine safely. Be alert. Observe all safety practices. Machines can be hazardous in the hands of an unfamiliar, untrained, or a complacent operator.

Don't Risk Injury or Death!

Before you operate the Autoloader, study this manual carefully. It has been prepared to help you operate and maintain your Autoloader with the utmost efficiency.

Assembled in this manual are operation, lubrication, and maintenance instructions for the Autoloaders. This material has been prepared in detail in the hope that it will help you to better understand the correct care and efficient operation of your Autoloader.

For prompt, efficient service always specify the machine model and serial number.

This manual is furnished with each new CRAFTCO AUTOLOADER KIT. The manual will help your machine operators learn to run the Autoloader properly and understand its mechanical functions for trouble-free operation.

Your local dealer is interested in the performance you receive from this Autoloader. They have factory-trained service personnel, informed in the latest method of equipment service parts which ensure proper fit and good performance. To obtain top performance and ensure economical operation, the Autoloader should be inspected, depending on its use, periodically or at least once a year by your Crafcoc Dealer.

Your CRAFTCO AUTOLOADER KIT is designed to give excellent service and save maintenance expense. However, as with all specially engineered equipment, you can get best results at minimum costs if:

1. You operate your machine as instructed in this manual,
2. Maintain your machine regularly as stated in this manual.



WARNING:

The engine exhaust from this product contains chemicals known to the State of California to cause cancer, birth defects, or other reproductive harm. Operate in well ventilated area only. Engine exhaust from the melter is deadly.

AUTOLOADER LIST

PART NUMBER	DESCRIPTION	INTERNAL PART NUMBER
51210	125 SUPER SHOT	(43600)
51177	125 SUPER SHOT COMPRESSOR	(43800)
51225	250 SUPER SHOT DIESEL	(44100)
51205	100 EZ POUR DIESEL COMPRESSOR	(42600)
51100	200 EZ POUR DIESEL MELTER	(41800)
51176	200 EZ POUR DIESEL COMPRESSOR	(43050)
51195	200 EZ POUR DIESEL-GRAVITY FEED	(41800)
51175	400 EZ POUR DIESEL MELTER WITHOUT ENGINE COVER (OLD STYLE)	(42800)
51175	400 EZ POUR DIESEL DOUBLE PUMPER WITHOUT ENGINE COVER (OLD STYLE)	(43000)
51175	400 EZ POUR DIESEL COMPRESSOR WITHOUT ENGINE COVER (OLD STYLE)	(43040)
51220	400 EZ POUR DIESEL MELTER WITH ENGINE COVER (OLD STYLE)	(42800, 43000, 43040)
51250	400 EZ POUR DIESEL MELTER WITH ENGINE COVER (43652) (NEW STYLE)	(42800, 43000, 43040)

SAFETY PRECAUTIONS



This symbol is used to call your attention to instructions concerning your personal safety. Be sure to observe and follow these instructions.

- A careful operator is the best insurance against an accident.
- Before handling any equipment, read the operators manual.
- Carefully supervise inexperienced operators.
- Always carry a “charged” fire extinguisher and a first aid kit.
- Avoid loose fitting clothing which could catch on moving parts.
- Know the controls and what they do.



- Make sure that the assistant or observers stand clear of the equipment.
- Always keep guards in place.
- No riders allowed.



- Check overhead clearance before driving under guide wires, low hanging tree branches, and entering or leaving buildings, etc.
- To ensure the protection provided by design, the protective structure must not be altered by welding, cutting, grinding, drilling, or by any other means.



SAFETY PRECAUTIONS (CONTINUED)

- High operating temperatures of sealant and machine require protective clothing, hard-soled shoes, and heat resistant gloves be worn by operator at all times.

- Always wear eye protection.



- Observe all **CAUTION AND WARNING** signs posted on machine.



- Avoid exposure of the machine and machine parts to water. Water will displace heat transfer oil or sealant which could be hazardous to surrounding personnel.
- Avoid bodily contact with hot mix material or heat transfer oil; serious burns may result.
- Read Operator Manual thoroughly before operating the equipment.
- Make sure the operator is familiar with machine operation.
- Only trained, qualified operators should be permitted to operate the Autoloader System.
- Do not operate in closed building or confined areas.
- The Autoloader should not be left unattended with the propane burner or pilot lit. (If so equipped.)
- Keep hands, feet, and clothing away from all moving parts. Keep away from pulleys when Autoloader is running.
- Do not wear loose clothing or uncovered hair around Autoloader in operation.
- Follow operating instructions for starting and shutdown of burner and pilot light.
- Replace any hoses which show signs of wear, fraying or splitting. Be sure all fittings and joints are tight and leak proof.
- Crafcoc, Inc. assumes no liability for an accident or injury incurred through improper use of the Autoloader.
- Do not operate an Autoloader with chain or other protective guards removed.
- Do not walk, ride, climb, or touch moving parts on an Autoloader in operation.

SAFETY PRECAUTIONS (CONTINUED)

- Do not work near an Autoloader without knowing how and where to shut power “OFF”.
- Do not remove jammed product with Autoloader running.
- Tighten all bolts and screws after every 50 hours of operation.
- Do not replace parts or perform maintenance on Autoloader, or moving Autoloader parts, without first shutting power “OFF” to the conveyor.
- To prevent electrical shock; Autoloader is grounded and will have proper electrical connections, in accordance, with federal, state, and local codes.
- Precaution is the best insurance against accidents.
- Always keep a fire extinguisher near the unit. Maintain extinguisher properly and be familiar with its use.
- Extreme care must be used when operating this equipment. Safety is the result of being careful and paying attention to details. Remember the propane flame is about 2200°F. Certain exposed parts of this machine, when operating reach 500°F.
- **If in doubt, ask your local CRAFCO Distributor or call CRAFCO at 1-800-528-8242.**



LIMITED WARRANTY

Crafco, Inc., through its authorized Distributor, will replace for the original purchaser free of charge, any parts found upon examination by the factory in Mesa, Arizona, to be defective in material or workmanship. This warranty is for a period within 60 days of purchase date, it doesn't include warranties issued by their manufacturers.

After 60 days, Crafco, Inc. warrants electrical components for a period of 90 days from date of delivery. Crafco, Inc., shall not be liable for parts that have been damaged by accident, alteration, abuse, improper lubrication/maintenance, normal wear, or other causes beyond our control.

The warranty provided herein extends only to the repair and/or replacement of those components on the equipment covered above and does not cover labor costs. The warranty does not extend to incidental or consequential damages incurred as a result of any defect covered by this warranty.

All transportation and labor costs incurred by the purchaser in submitting or repairing covered components must be borne by the purchaser.

Crafco, Inc. specifically disavows any other representation, warranty, or liability related to the condition or use of the product.



WARNING: Use of replacement parts other than genuine Crafco parts may impair the safety or reliability of your equipment and nullifies any warranty.

This warranty shall not apply to any machine or parts altered and modified without the consent of Crafco Inc., nor shall it apply to normal wear and tear, nor when misuse, negligence or accident are evident, nor when machines have been operated at speed or loads beyond factory rated capacities or specifications.

The warranty provided herein extends only to the repair and/or replacement of those components of the equipment covered above, and does not extend to incidental or consequential damages incurred as a consequence of any defects covered by this warranty.

Crafco, Inc. specifically disavows any other representation warranty or liability related to the condition or use of the product.

WARRANTY CLAIM INSTRUCTIONS

Please follow the instructions stated below when calling in a Warranty Claim. Failure to follow these procedures may be cause to void warranty.

1. Call your local Crafcro Distributor to report a Warranty Claim. If you do not know who your local representative is, call a Crafcro Customer Service Representative (toll free 1-800-528-8242) for the name, location and telephone number. Obtain a return authorization number to return a defective part.
2. Indicate to the Crafcro Customer Service Representative the machine type, model number, serial number, and date of purchase (if available) under warranty, and a brief description of the warranty defect. A replacement part will be shipped immediately F.O.B. Mesa, Arizona and invoiced.
3. Return the defective part to Crafcro within fifteen (15) days of the date the claim was called in. Indicate on shipper, packing slip, or by letter the model number and serial number of the machine from which the defect is being claimed along with the part being returned. If the defective part is not returned to Crafcro within the fifteen (15) day period or if the defect is determined by Crafcro, Inc. to be due to normal wear and tear or misuse, the claim will be voided. The customer will be notified within ten (10) days of disposition of the claim. If the failure was caused by a defect in material or workmanship, a credit will be issued. A return authorization number must accompany any part being returned.
4. Should the cause of the malfunction be a defective part, the distributor will advise you of the procedure to follow for a replacement.
5. The warranty is valid for parts which have been supplied or recommended by Crafcro, Inc.

If you have any additional questions regarding warranty repairs and parts, please do not hesitate to call toll free 1-800-528-8242.

CRAFSCO™, Inc.
25527 South Arizona Ave.
Chandler, AZ. 85248
480-655-8333
Fax: 480-655-1712
Toll Free 1-800-528-8242

SPECIFICATIONS

10' Autoloader Section	Frame: 3-1/2" x 1-1/2" x 10 ga. channel frame with 1.9" dia. x 16 ga. rollers. Rollers: 1.9" dia. adjuster rollers, Overall Width: 18" Roller centers: 3"; 15" between frame rails Capacity: Holds up to 800 lbs.
Support Legs (Old Style)	Heavy duty structural supports. Capacity rating is 6000 lbs. per support. Adjustment up to 12" per support.
Take-Up End	Screw type unit at tail pulley 4" end take-up. Pulley; 4" dia. with 1-3/16" dia. shaft, crown Frame: 7" x 1-1/2" x 12 ga. steel Rollers: 1.9" dia. x 16 ga. steel roller Capacity: 400 lbs. Bearing: Heavy duty reliable ball bearing with cast iron housing.
Drive End	Pulley: 4" dia. with 1-3/16" dia. shaft Frame: 7" x 1-1/2" x 12 ga. steel Rollers: 1.9" dia. x 16 ga. steel rollers Capacity: 400 lbs. Bearing: Heavy duty reliable ball bearing with cast iron housing.
Autoloader Belt	White friction surface butyl material withstand temperature up to 500° F. 12" belt width.
Hydraulic Solenoid Valve	Four-way electrically controlled solenoid valve.
Electrical	Momentary "ON" switch, emergency stop button to disable the conveyor. Momentary switch activates to move the sealant blocks forward. "FOR-REV" switch, curbside momentary "ON" switch. Water proof electrical components. Circuit breaker for added protection to the Equipment. Valve is activated by an electric solenoid.

AUTOLOADER OPERATING INSTRUCTIONS

INTRODUCTION

These specifications describe features that shall be required in an Autoloader kit. This equipment shall be used to convey crack sealant blocks weighing up to 60 pounds to the Crafcro EZ Pour Melter and Super Shot Melters from the back of a tow vehicle. Sealant blocks are placed on the autoloader and fed to the melter as needed. The loading hatch will be equipped with a splash resistant loading tower that will automatically close as sealant blocks are dropped. The system may be field installed on all EZ Pour Melters and Super Shot Melters. Contact an authorized Crafcro employee and/or distributor for assistance.

- Remember that safe operation of this equipment is the operator's responsibility.
- Personnel intending to operate the Autoloader System should be experienced and qualified.
- Operators should be familiar with the Autoloader System and always operate the unit in a responsible manner.



CAUTION:

Extreme care must be used when operating this equipment. Safety is the result of being careful and paying attention to details. Certain exposed parts of this machine will cause serious injury. Always wear protective clothing, hard-soled shoes, eye protection and other job site required safety equipment.

Be sure all joints and fittings are tight and leak proof. Immediately replace any hose which shows any signs of wearing, fraying, or splitting. Tighten all bolts, nuts, and screws every 50 hours.

OPERATIONAL PRECAUTIONS



Before attempting to start or operate the Autoloader, be sure to review all the instructions for your new Autoloader, and thoroughly familiarize yourself with the Autoloader instruments and controls.

- Know where the Autoloader safety shut down switches are located.
- Check to see if the switches are operating properly.



CAUTION! Never allow riders on the Autoloader.

- Make sure the Autoloader belt is tracking properly in the middle of the Autoloader bed.
- Check Autoloader belt tension.



CAUTION! You must stay clear of the loading tower when a sealant block is going to be dropped.

Note: Electrical controls require the key station to be in the “ON” position to receive power.

- Hydraulic hoses must be maintained in good condition and all connects must be tight.



CAUTION! Never work on any part of the electrical system without disconnecting the battery ground cables at the battery terminal. Do not reconnect them until all electrical work has been completed. This will prevent shorts or electrical shocks.

- Battery cable terminal stud and nuts should be kept clean and tight.
- In order to ensure satisfactory operation of electrical system, a periodic check should be made.
- The **CRAFECO AUTOLOADER** is designed to convey sealant product to the splash proof sealant loading tower from the back of a tow vehicle.
- The melter should not be left unattended with sealant blocks on autoloader. Sealant blocks should be removed from the Autoloader when traveling to and from a job site, or when speeds exceed 10 m.p.h.

OPERATIONAL PRECAUTIONS (CONTINUED)

- Replace the T-handle ball lock pin to the loading door.
- Make sure the viewing side door is latched before transport.
- Use caution when loading material to prevent excess spillage.
- Do not exceed vehicle axle capacity. Use a vehicle with a minimum of 5000 pound hitch capacity.

AUTOLOADER START UP

TO START THE CONVEYOR:

1. Start engine per Engine Manual.
2. Always make sure the Autoloader belt is empty of all sealant blocks or other items.
3. Make sure the emergency stop switch is pulled out in both locations.
4. Push the curbside operations switch "ON" to see if the Autoloader is working properly before loading any sealant blocks.
5. To load, remove the locking pin on the loading door, and place the material on the Autoloader belt as required to feed the melter. Hold the operator "ON" control switch at the loading end of the Autoloader. The momentary switch is activated to move the sealant blocks forward. Following this procedure will prevent the hot material from splashing and causing serious burns to personnel.



CAUTION:

To prevent injuries, never open the splash resistant loading tower swing doors while the Autoloader is operating.

6. Always maintain the equipment properly. Tighten loose bolts, all electrical connections, and all hydraulic hoses.
7. The solid material must be added at intervals which allow the mixer (or agitator) to rotate without jamming. If blocks of material are fed in too quickly, jamming will result and slow down the melting process.

SHUT DOWN AND CLEAN-OUT PROCEDURE

1. Read the “Shutdown and Clean-Out Procedure” in your Crafcro Melter Operation Manual.
2. Remove all sealant blocks from the Autoloader belt at the end of the shift.
3. Turn the top curbside weatherproof operation switch in the “FOR-REV” position to reverse. Push the momentary “ON” switch and hold the button until the sealant blocks are removed.
4. Unload autoloader belt completely; replace the locking pin in the loading door.
5. Push the emergency switch “STOP” button in at the end of the day of operation.



STORING MACHINE

The Autoloader and melter should be stored in an area where moisture cannot damage the electrical wiring and where the unit itself will not be damaged. If your melter with the Autoloader is not to be used for sometime, it should be stored in a dry and protected place.

Leaving your melter outdoors, exposed to the weather, significantly shortens its life.

INSTRUCTIONS FOR ORDERING PARTS

Parts may be ordered from your local CrafcO Distributor or directly from CrafcO, Inc. if a Distributor is not available in your area. When ordering parts, give the following information:

1. Part Number
2. Machine Model
3. Serial Number from Name Plate

Write, telephone or fax:

CRAFCO, Inc.
25527 South Arizona Ave.
Chandler, AZ. 85248
Phone: 480-655-8333
Fax: 480-655-1712
Toll Free: 1-800-528-8242

TROUBLE SHOOTING CHART






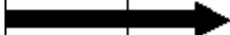
PROBLEMS	CAUSE	REMEDY
Autoloader will not move.	Broken electric wires. Water may be in the switch boxes.	Check electric circuit. Open electric switch boxes.
Autoloader runs too fast.	Too much hydraulic fluid.	Check the flow control to the 4-way valve and mixer valve.
Belt too loose	The belt is stretched out.	On the take up end move the bolts the same distance to take up the slack.

SERVICE AND MAINTENANCE INSTRUCTIONS

1. Conduct a general inspection of the Autoloader daily. Replace all worn or damaged parts, make any necessary adjustments, and tighten all loose nuts or screws.
2. Keep regular replacement items in stock for emergency repairs to avoid costly "down" time.
3. Keep exterior of Autoloader clean using a suitable solvent.
4. Follow "Recommended Maintenance Procedures" on Maintenance Chart.
5. Watch for hydraulic leaks. Tighten fittings or repair as necessary.
6. Clean external of machine periodically. Check with sealant manufacturer for recommendation.

To keep your Autoloader performing efficiently, it is advisable to systematically inspect the following points at intervals as outlined below.

MAINTENANCE CHART

LOCATION	PROCEDURE	HOURS			
		8	50	100	500
10' SECTION AUTOLOADER	Inspect and tighten if necessary, replace broken or damaged bolts and nuts.				
FLANGE BOLTS	Inspect and tighten if necessary, replace broken or damaged bolts or nuts.				
WIRING	Inspect and replace or repair if necessary.				
SUPPORT LEGS	Inspect and tighten if necessary, replace broken or damaged bolts or nuts.				
HYD. SOLENOID	Inspect and tighten if necessary, replace broken or damaged hoses.				
CHAIN	Inspect and tighten chain by removing the chain guard.				

ENGINEERING APPLICATION DATA

BELT TRACKING

(See drawing on page 24.)

When planning a conveyor system, consideration must always be given to installation. A crucial part of belt driven conveyor installation procedures is belt tracking.

Conveyor belt tracking is the process of adjusting the conveyor pulleys, snub rollers and loading conditions in a manner to correct any tendencies of the belt to run other than true. Belt tracking is based on this principle: **A belt moves to the side of the roller it contacts first in the direction of travel.**

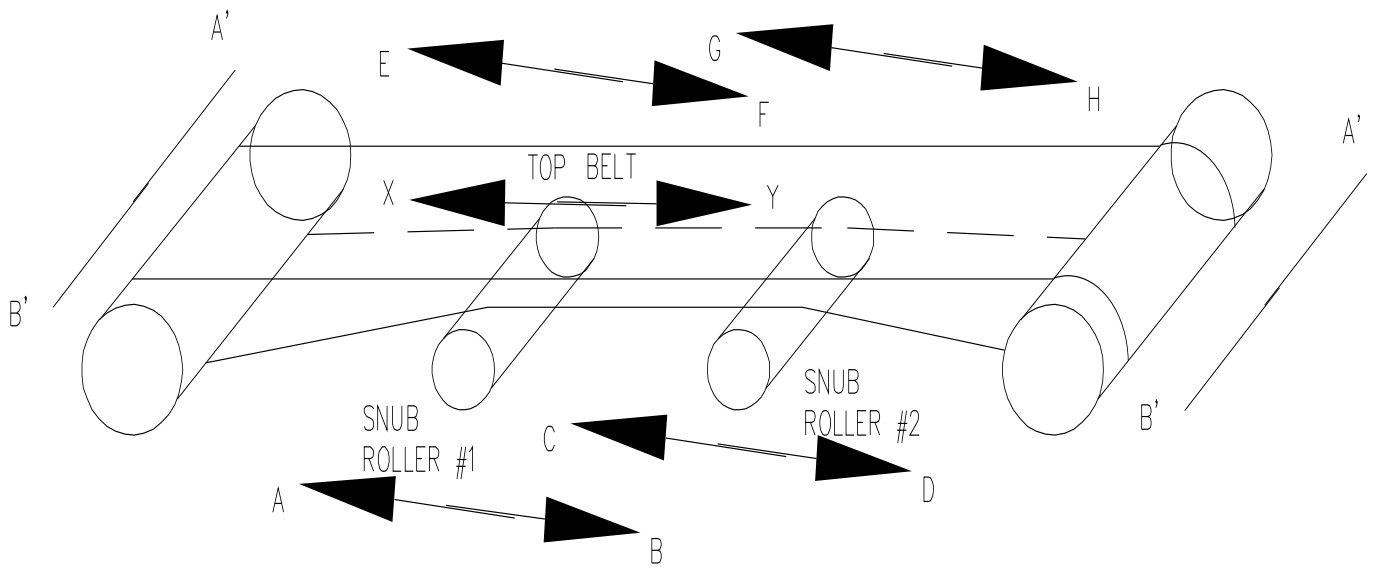
IMPORTANT:

1. Before attempting to track the belt, be certain both the tail pulley and the drive pulley are square to the frame. Tracking with pulleys out of square can result in belt damage.
2. DO NOT ATTEMPT TO TRACK THE BELT WITH THE TAKE-UP PULLEY.
3. Make small adjustments. Allow the belt to run for several minutes after each adjustment if additional “tracking” is required.

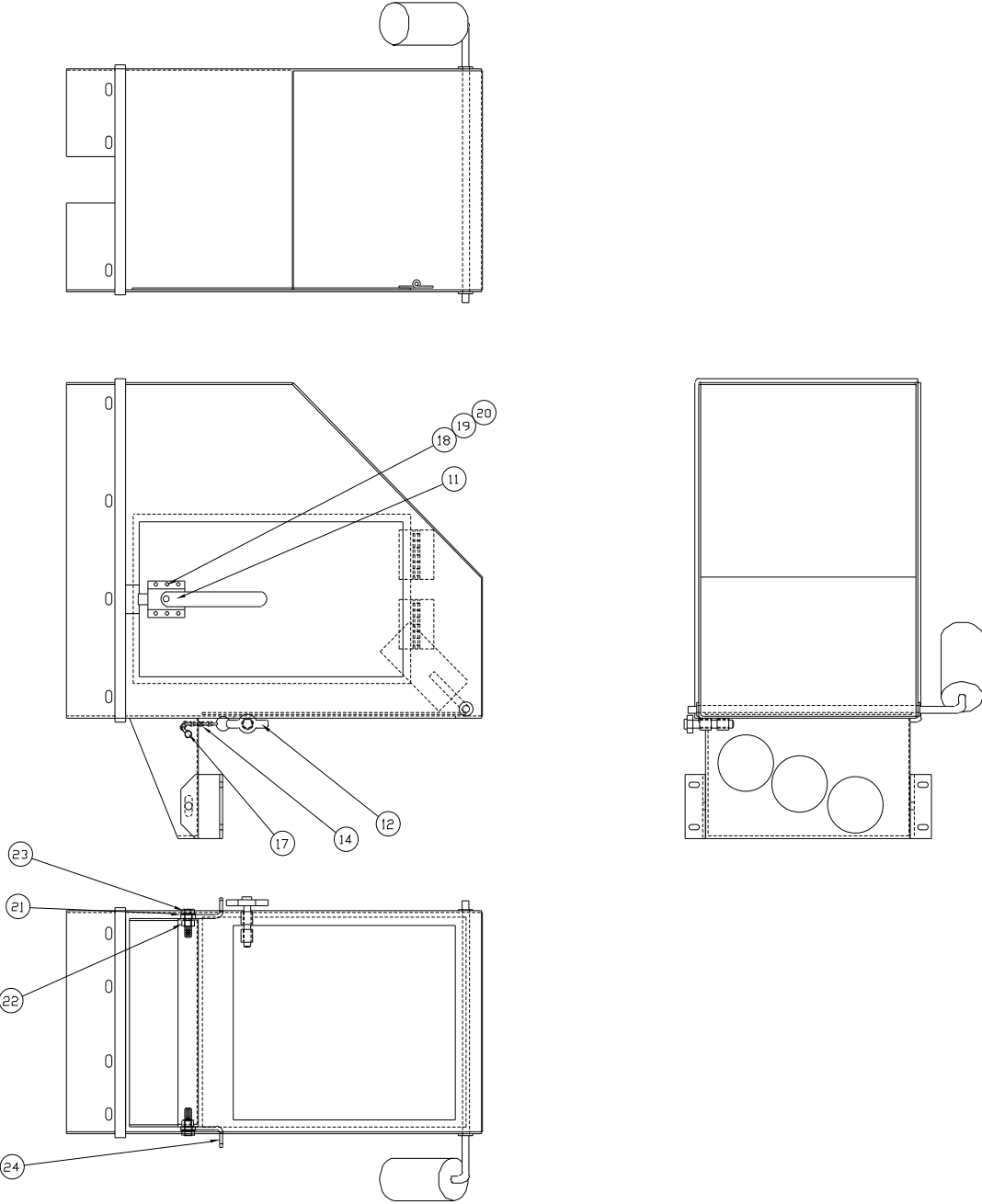
BELT TRACKING PROCEDURE

1. BELT MOVING IN THE “Y” DIRECTION: To move the belt toward the A’ end of the pulley, move Snub Roller 1 in A or F direction. To move the belt toward the B’ end of the pulley, move Snub Roller 1 in the B or E direction.
2. BELT MOVING IN THE “X” DIRECTION: To move the belt toward the A’ end of the pulley, move Snub Roller 2 in the D or G direction. To move the belt toward B’ end of the pulley, move Snub Roller 2 in the C or H direction.

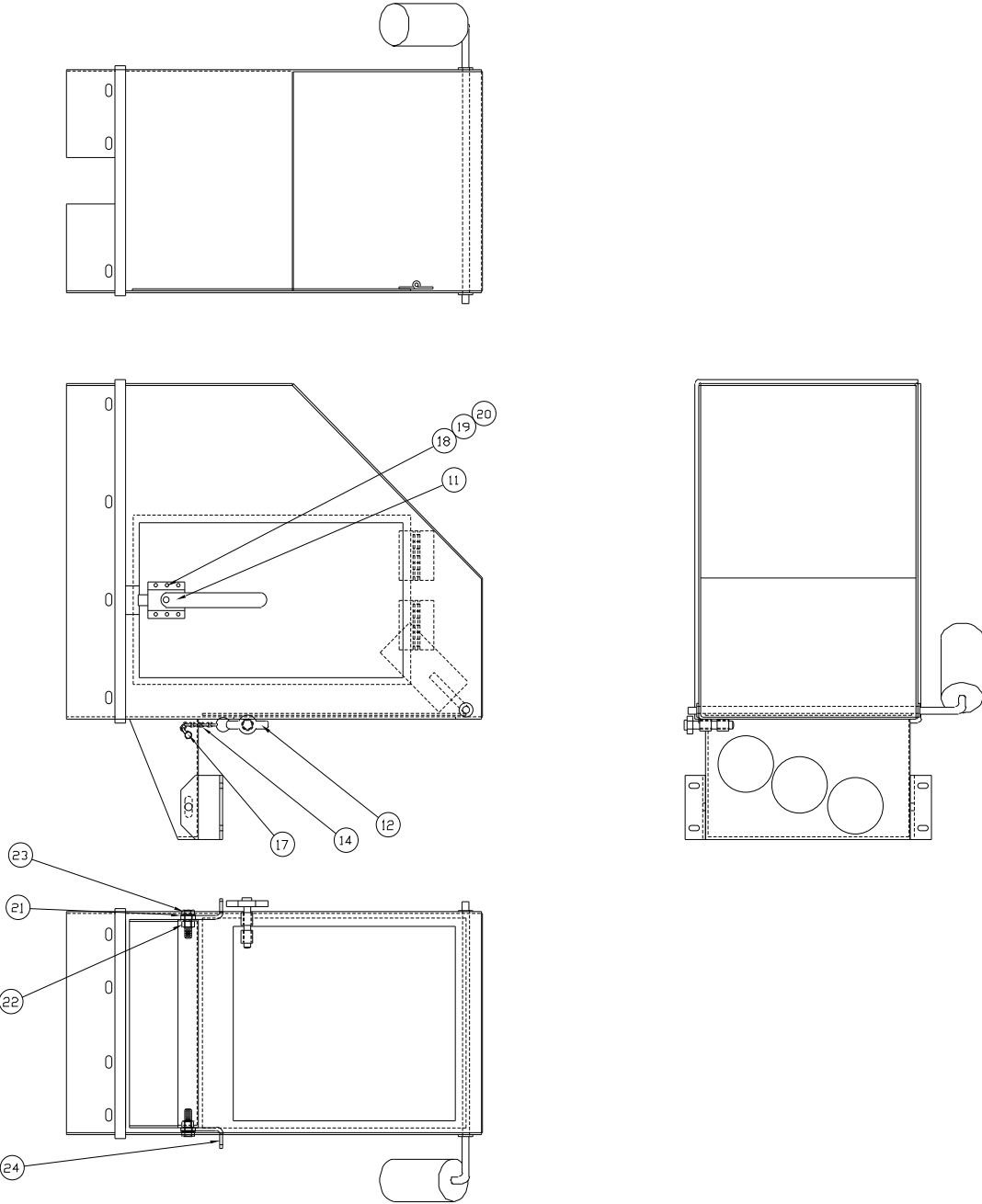
BELT TRACKING



SMALL SPLASH BOX ASSEMBLY--EZ100, SS125-PART NUMBER 51290



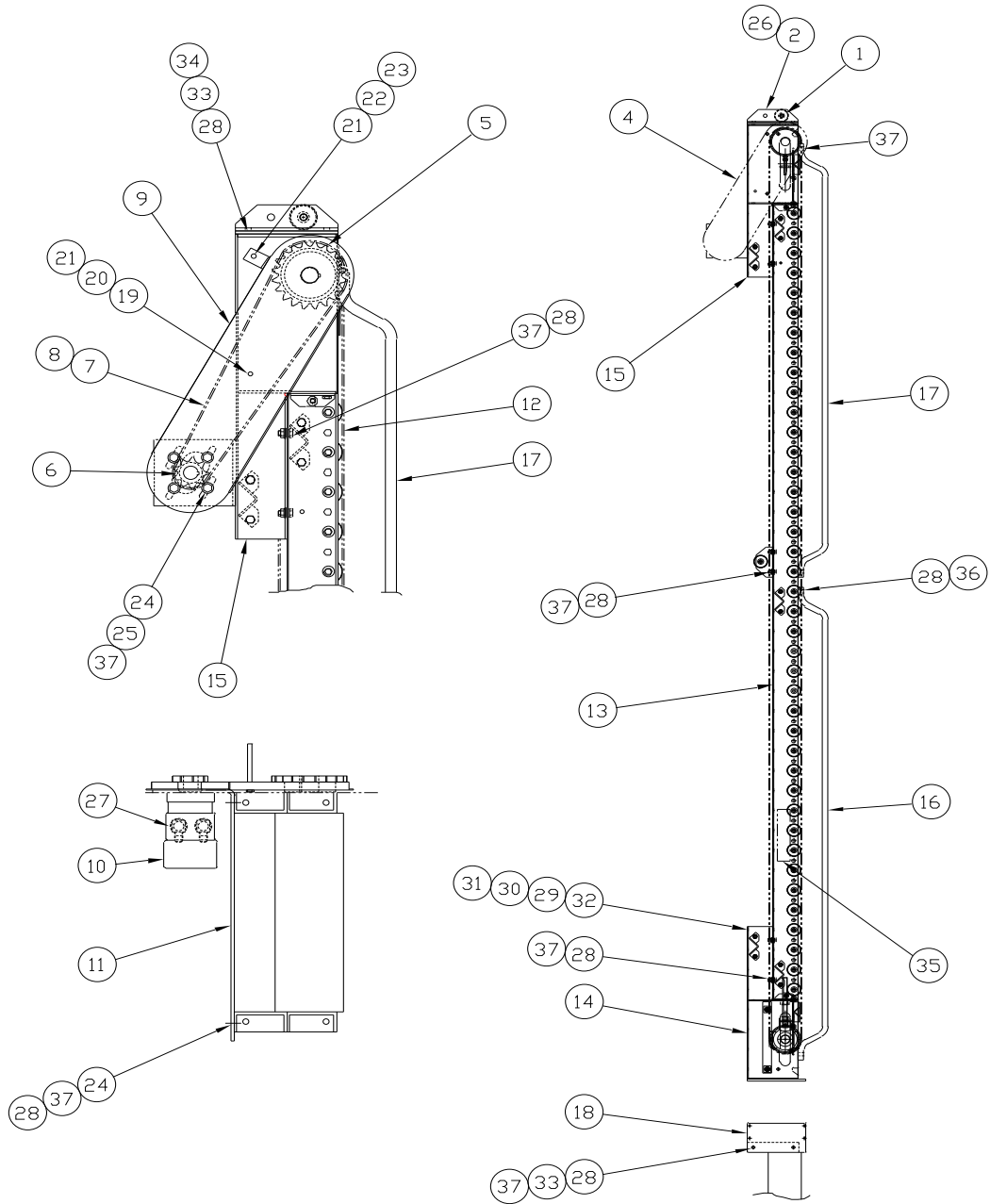
SMALL SPLASH BOX ASSEMBLY--EZ100, SS125-PART NUMBER 51290



SMALL SPLASH BOX ASSEMBLY--EZ100,SS125-PART NUMBER 51290

ITEM	PART NUMBER	QTY.	DESCRIPTION
1	51191	1	ROD, SWING DOOR
2	51146	1	COUNTER WEIGHT
3	51187	2	SPLASH BOX STRIPS
4	51292	1	DRIVERS SIDE & REAR
5	51291	1	FRONT & LEFT SIDE
6	51293	1	TOP COVER
7	51288	1	CONVEYOR BASE
8	51289	1	SWING DOOR
9	51268	1	SUPPORT GUSSET
10	51277	1	SIDE DOOR WELD ASSY
11	51278	1	HEAVY DUTY LATCH
12	51279	1	T-HANDLE BALL LOCK PIN
13	51281	1	SPLASH GUARD ANGLE
14	43417	1	11 LINK CHAIN
15	31211	2	PIPE SPACER 7/8" LONG
16	31092	1	DEPTH POINTER
17	28985	1	1/4 X 3/4 SELF TAP SCREW
18	28938	6	#8-32 X 3/4 SOCKET SCREW
19	28835	6	#8-32 NUT
20	28644	6	#10 LOCK WASHER
21	28674	2	1/2 FLAT WASHER
22	28528	2	1/2 ESNA NUT
23	28763	2	1/2-13 X 1-3/4 BOLT
24	51265	2	CONV. BASE BRACKET
25	51283	1	SML SPLASH GRD ANGLE
26	26113	1	THREADED EYEBOLT 1/2"
27	28540	1	1/2-13 UPSET NUT

CONVEYOR ASSEMBLY--ALL UNITS-PART NUMBER 51110



CONVEYOR ASSEMBLY--ALL UNITS-PART NUMBER 51110

ITEM	PART NUMBER	QTY.	DESCRIPTION
1	51103	1	ROLLER
2	51141	1	CURB SIDE ROLLER BRACKET
3	51142	1	DRIVER'S SIDE ROLLER BRACKET
4	51121	1	OUTER CHAIN GUARD
5	51116	1	DRIVEN SPROCKET
6	51115	1	DRIVER SPROCKET
7	51117	1	CHAIN
8	51161	1	CONNECTING LINK
9	51118	1	INNER CHAIN GUARD
10	22027	1	HYDRAULIC MOTOR
11	51143	1	HYDRAULIC MOTOR BRACKET
12	51155	1	CONVEYOR BELT
13	51109	1	CONVEYOR SECTION
14	51111	1	TAKE-UP END
15	51108	1	END DRIVE
16	51137	2	LONG SIDE RAIL
17	51136	2	SHORT SIDE RAIL
18	51138	1	MOUNT PLATE
19	28619	1	5/16"-18 WING NUT
20	28646	1	5/16" LOCKWASHER
21	28671	4	5/16" FLAT WASHER
22	28525	1	5/16" -18 ESNA NUT
23	28716	1	5/16"-18 X 1" BOLT
24	28641	12	3/8" FLAT HARDENED WASHER
25	28647	4	3/8" LOCK WASHER

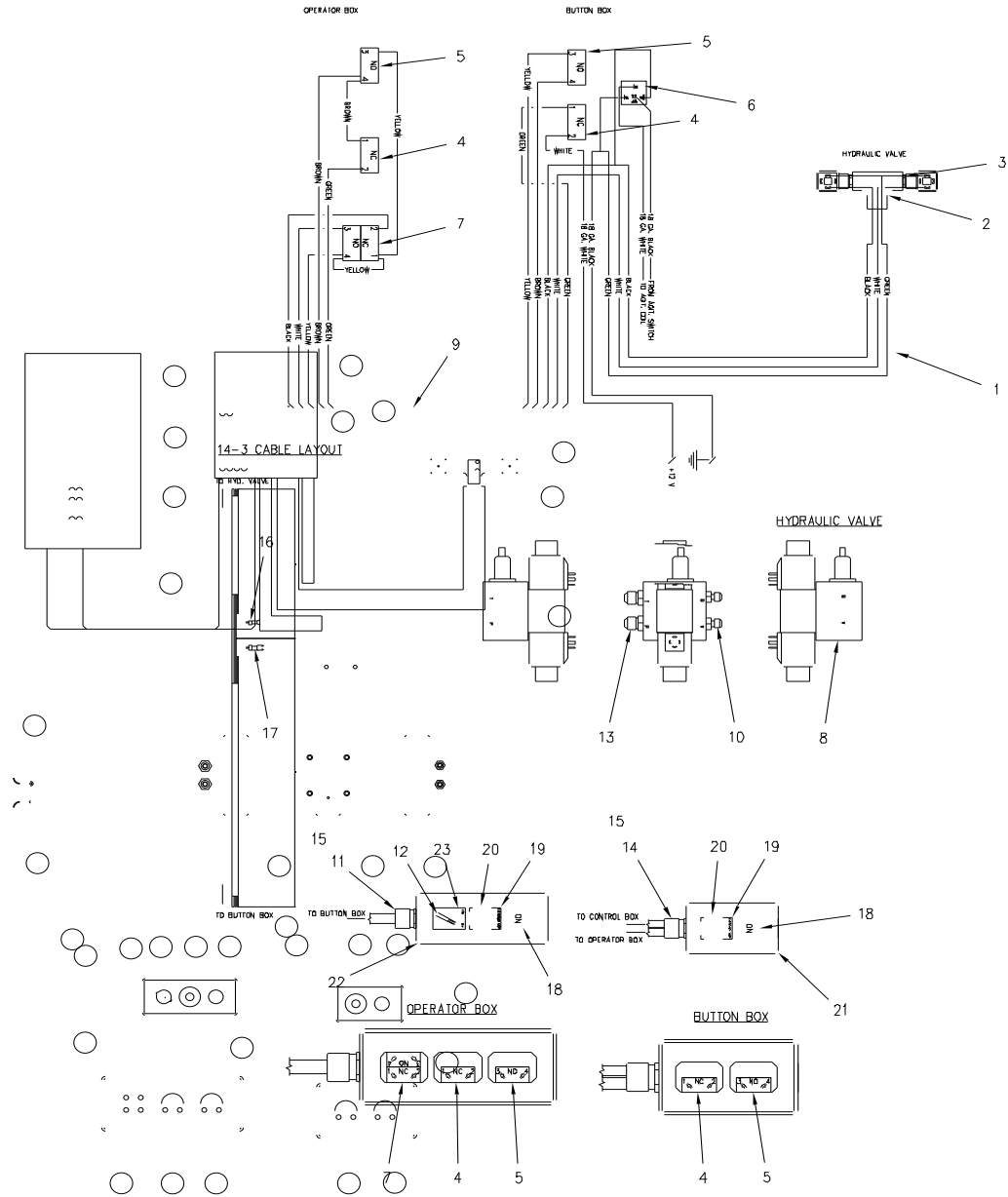
CONVEYOR ASSEMBLY--ALL UNITS-PART PNUMBER 51110

ITEM	PART NUMBER	QTY.	DESCRIPTION
26	28732	8	3/8"-16 x 1-1/4" BOLT
27	29828	2	90 DEG ELBOW ADAPTER
28	28526	47	3/8"-16 ESNA NUT
29	28606	10	1/4"-20 INSERT
30	28645	10	1/4" LOCKWASHER
31	28701	10	1/4"-20 X 3/4" BOLT
32	32017	10	COVERED CLAMP
33	28672	12	3/8" FLAT WASHER
34	28732	6	3/8"-16 NC X 1-1/4" BOLT
35	26199	2	CRAFCO DECAL
36	28733	8	3/8"-16 NC X 1-1/2" BOLT
37	28731	38	3/8"-16 X 1" BOLT

HYDRAULIC AND ELECTRICAL SCHEMATIC

- 51210 125 SUPER SHOT--26679 HYDRAULIC, 26678 CLOSED ELECTRICAL, & 26694 OPEN ELECTRICAL
- 51177 125 SUPER SHOT COMPRESSOR--26684 HYDRAULIC, 26678 CLOSED ELECTRICAL, & 26694 OPEN ELECTRICAL
- 51225 250 SUPER SHOT DIESEL--26693 & 26678 CLOSED ELECTRICAL, & 26694 OPEN ELECTRICAL
- 51205 100 EZ POUR DIESEL COMPRESSOR--26680 HYDRAULIC & 26681 ELECTRICAL
- 51176 200 EZ POUR DIESEL COMPRESSOR--26680 HYDRAULIC & 26681 ELECTRICAL
- 51175 400 EZ POUR DIESEL MELTER--26683 HYDRAULIC & 26682 ELECTRICAL--WITHOUT ENGINE COVER
- 51175 400 EZ POUR DIESEL DOUBLE PUMPER--26683 HYDRAULIC & 26682 ELECTRICAL WITHOUT ENGINE COVER
- 51175 400 EZ POUR DIESEL COMPRESSOR--26683 HYDRAULIC & 26682 ELECTRICAL--WITHOUT ENGINE COVER
- 51220 400 EZ POUR DIESEL MELTER--26683 HYDRAULIC & 26682 ELECTRICAL--WITH ENGINE COVER
- 51250 400 EZ POUR DIESEL MELTER CONVEYOR KIT--26683 HYDRAULIC & 26682 ELECTRICAL--WITH OR WITH OUTENGINE COVER (43652)
AS OF 10 JUNE 99.

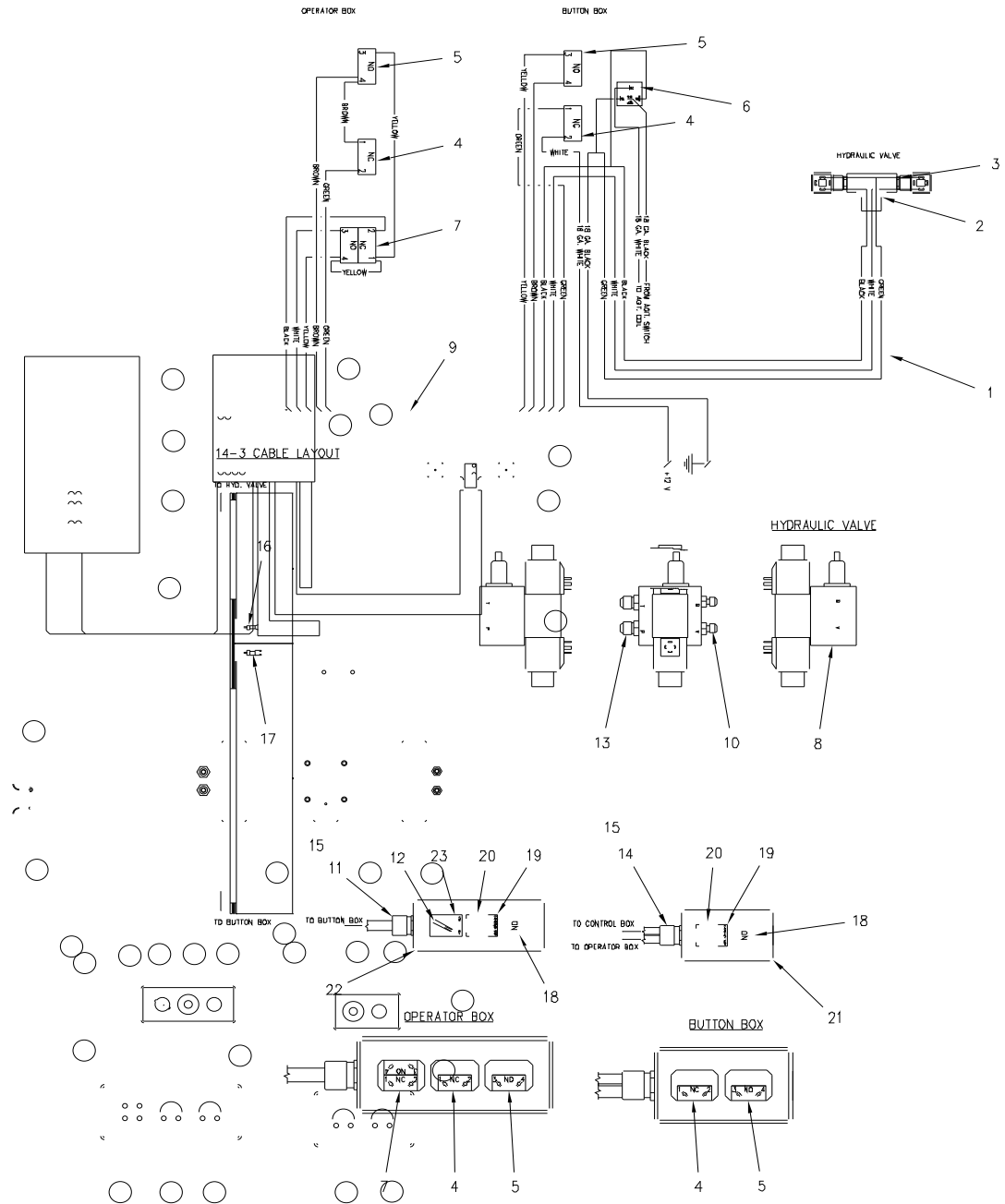
SUPER SHOT CLOSED CENTER ELECTRIC SCHEMATIC-PART NUMBER 26678



SUPER SHOT CLOSED CENTER ELECTRIC SCHEMATIC-PART NUMBER 26678

ITEM	PART NUMBER	QTY.	DESCRIPTION
1	24177	19'	14-3 CABLE
2	51653	1	PLASTIC TEE
3	26073	2	TIE
4	51129	1	CONTACT BLOCK
5	51127	2	CONTACT BLOCK
6	51673	1	NC, RELAY
7	51128	1	CONTACT BLOCK
8	43956	1	SOLENOID OPERATED HYD. VALVE
9	24179	90"	14-6 CABLE
10	29919	2	3/8 TUBE X 1/2 O-RING ADAPTER
11	24024	1	1/2 NPT X 1/2 CORD CONNECTOR
12	51124	1	"FOR-REV" LEGEND
13	29897	2	1/2 TUBE X 1/2 O-RING ADAPTER
14	24021	1	1/2 NPT X 3/8 CORD CONNECTOR
15	50280	2	1/2" CONDUIT NUT
16	24215	1	EYELET TERMINAL
17	24021	1	EYELET TERMINAL
18	51124	2	"ON" BUTTON
19	51130	2	LEGEND "EMERGENCY"
20	51126	2	EMERGENCY STOP BUTTON
21	51135	1	ENCLOSURE
22	51133	1	ENCLOSURE
23	51131	1	LEGEND "FOR-REV"

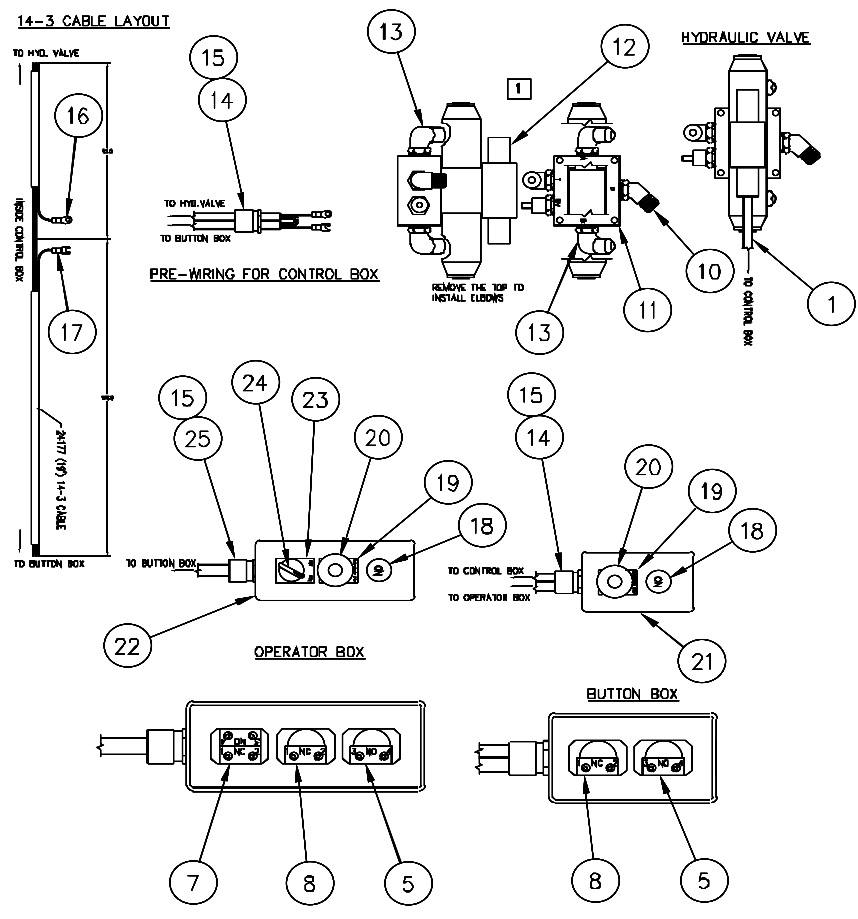
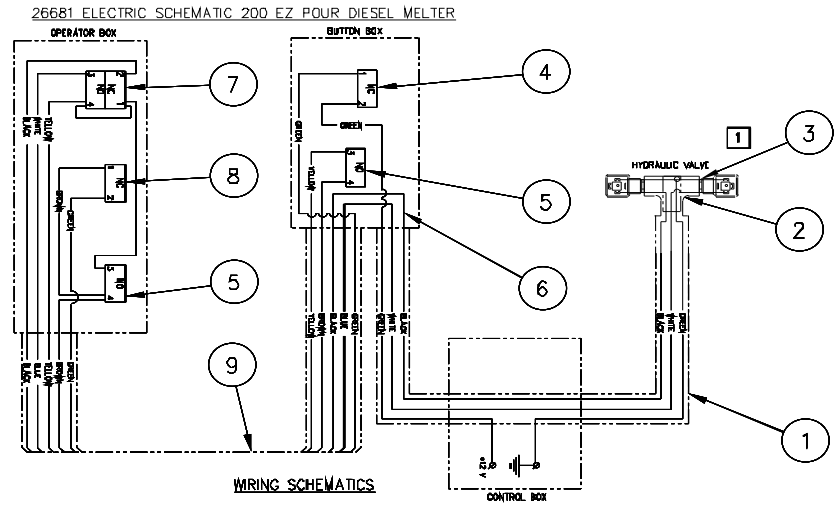
SUPER SHOT OPEN CENTER ELECTRIC SCHEMATIC-PART NUMBER 26694



SUPER SHOT OPEN CENTER ELECTRIC SCHEMATIC-PART NUMBER 26694

ITEM	PART NUMBER	QTY.	DESCRIPTION
1	24177	19'	14-3 CABLE
2	51653	1	PLASTIC TEE
3	26073	2	TIE
4	51129	1	CONTACT BLOCK
5	51127	2	CONTACT BLOCK
6	51673	1	NC, RELAY
7	51128	1	CONTACT BLOCK
8	42286	1	SOLENOID OPERATED HYD. VALVE
9	24179	90"	14-6 CABLE
10	29869	1	3/8 TUBE X 1/2 O-RING ELBOW
11	24024	1	1/2 NPT X 1/2 CORD CONNECTOR
12	51124	1	"FOR-REV" LEGEND
13	29897	2	1/2 TUBE X 1/2 O-RING ADAPTER
14	24021	1	1/2 NPT X 3/8 CORD CONNECTOR
15	50280	2	1/2" CONDUIT NUT
16	24215	1	EYELET TERMINAL
17	24021	1	EYELET TERMINAL
18	51124	2	"ON" BUTTON
19	51130	2	LEGEND "EMERGENCY"
20	51126	2	EMERGENCY STOP BUTTON
21	51135	1	ENCLOSURE
22	51133	1	ENCLOSURE
23	51131	1	LEGEND "FOR-REV"
24	29998	1	3/8 TUBE X 1/2 O-RING ADAPTER

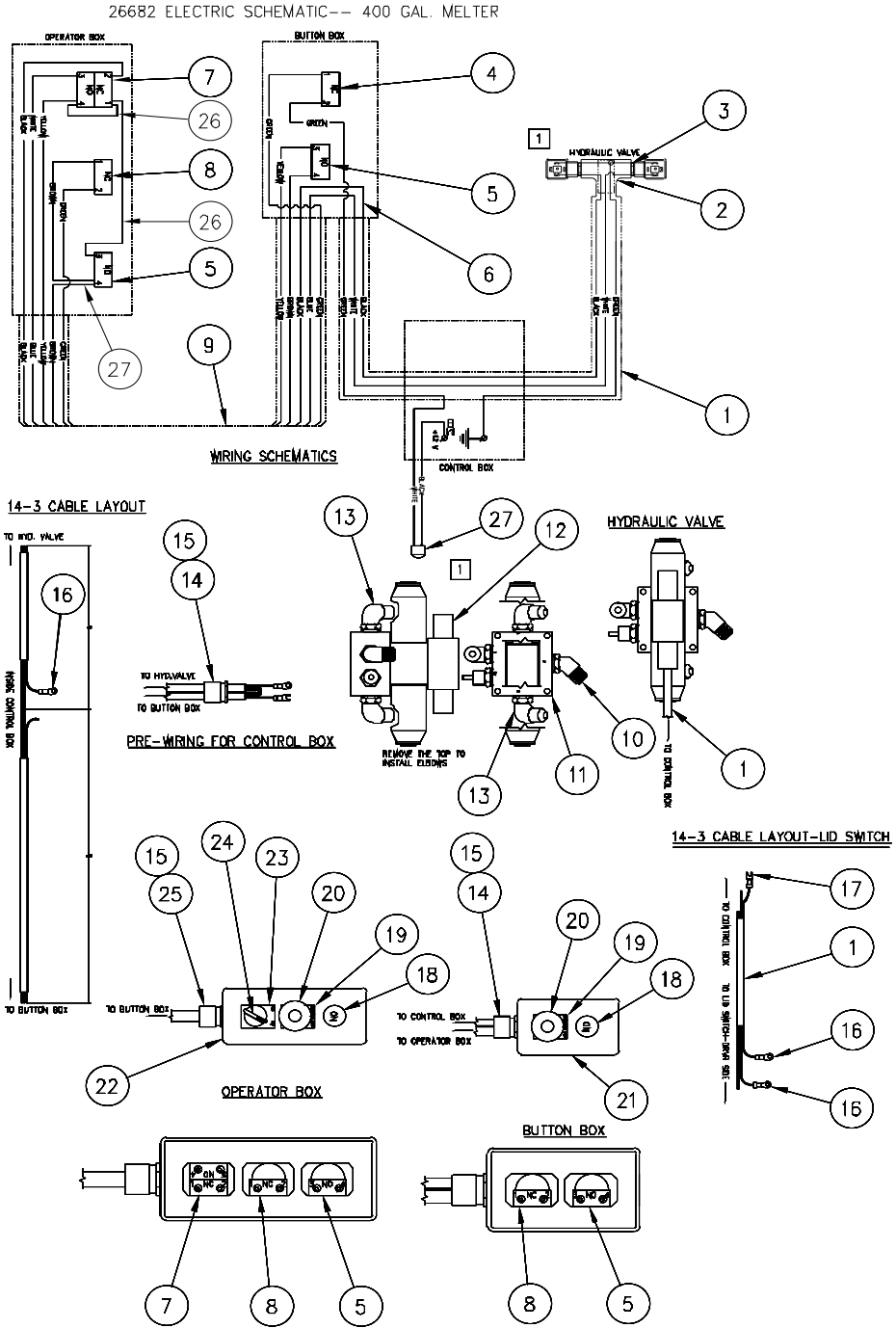
EZ POUR 100 DC, 200D, & 200DC MELTER--ELECTRIC SCHEMATIC-- PART NUMBER 26681



**EZ POUR 100 DC, 200D, & 200DC MELTER--ELECTRIC SCHEMATIC-
PART NUMBER 26681**

ITEM	PART NUMBER	QTY.	DESCRIPTION
1	24177	19'	CABLE
2	51653	1	PLASTIC TEE
3	26073	2	TIE
4	51129	1	CONTACT BLOCK
5	51127	2	CONTACT BLOCK
6	24044	3	WIRE NUT
7	51128	1	CONTACT BLOCK
8	51129	2	CONTACT BLOCK
9	24179	90"	CABLE
10	29910	1	ELBOW ADAPTER
11	42286	1	HYDRAULIC VALVE
12	43474	2	DIM PLUG
13	29869	3	ELBOW ADAPTER
14	24024	1	CORD CONNECTOR
15	50280	3	1/2" CONDUIT NUT
16	24027	1	EYELET TERMINAL
17	24034	1	FORK TERMINAL
18	51124	2	"ON" BUTTON
19	51130	2	LEGEND "EMERGENCY"
20	51126	2	EMERGENCY STOP BUTTON
21	51135	1	ENCLOSURE
22	51133	1	ENCLOSURE
23	51131	1	LEGEND "FOR-REV"
24	51125	1	SWITCH "FOR-REV"
25	24021	1	CORD CONNECTOR

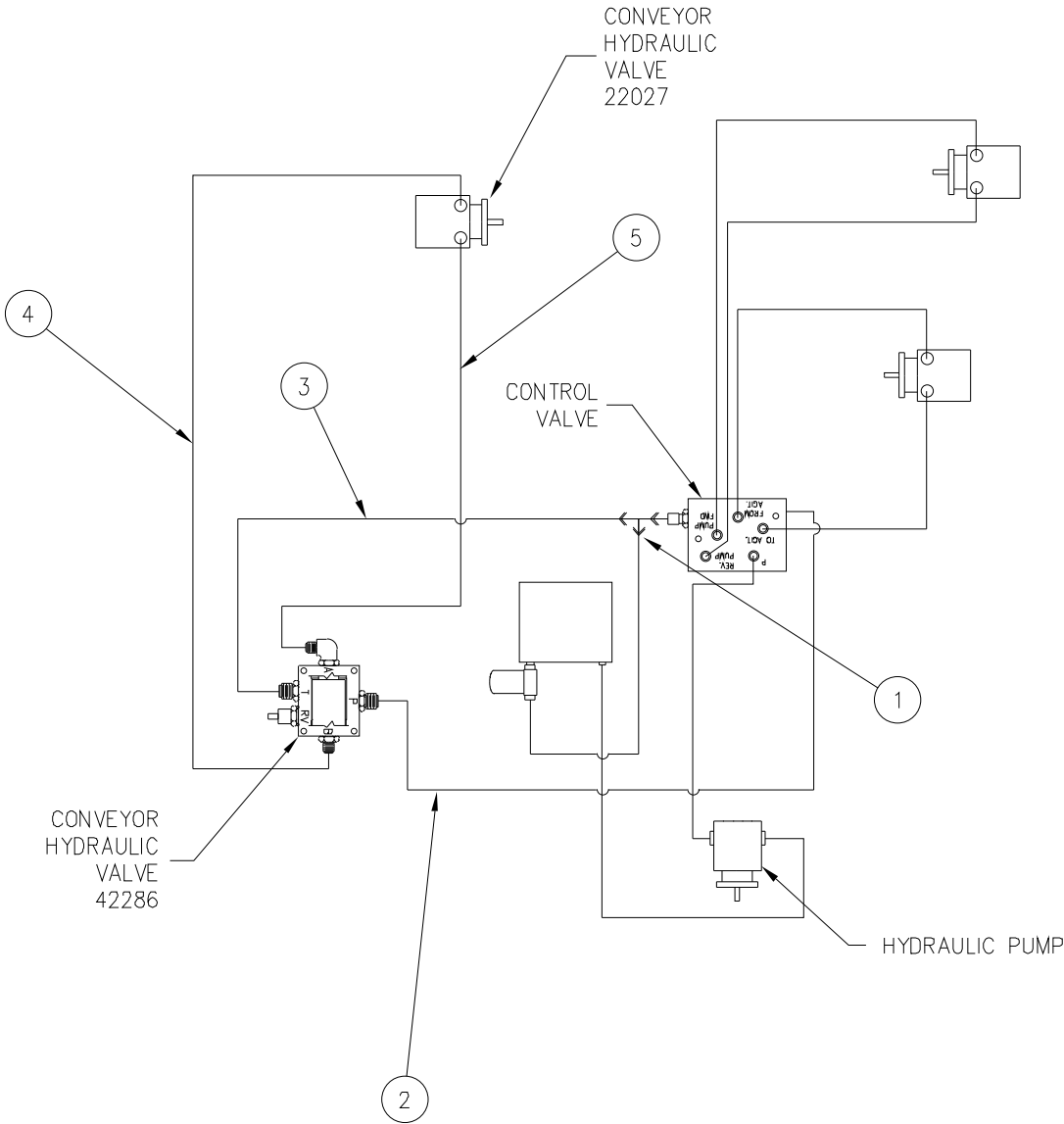
EZ POUR 400 DIESEL MELTER--ELECTRIC SCHEMATIC-PART NUMBER 26682



EZ POUR 400 DIESEL MELTER--ELECTRIC SCHEMATIC-PART NUMBER 26682

ITEM	PART NUMBER	QTY.	DESCRIPTION
1	24177	26'	14-3 CABLE
2	51653	1	PLASTIC TEE
3	26073	2	TIE
4	51129	1	CONTACT BLOCK
5	51127	2	CONTACT BLOCK
6	24044	3	WIRE NUT
7	51128	1	CONTACT BLOCK
8	51129	1	CONTACT BLOCK
9	24179	9'	14-6 CABLE
10	29910	1	45 DEG ELBOW ADAPTER
11	42286	1	HYDRAULIC VALVE
12	43474	2	DIM PLUG
13	29869	3	90 DEG THREAD O'RING CONNECTOR
14	24024	1	1/2 NPT X 1/2 CORD CONNECTOR
15	50280	2	1/2" CONDUIT NUT
16	24027	3	EYELET TERMINAL
17	24034	1	FORK TERMINAL
18	51124	2	"ON" BUTTON
19	51130	2	LEGEND "EMERGENCY"
20	51126	2	EMERGENCY STOP BUTTON
21	51135	1	ENCLOSURE
22	51133	1	ENCLOSURE
23	51131	1	LEGEND "FOR-REV"
24	51125	1	"EOR-REV" SWITCH
25	24021	1	1/2" NPT X 3/8" CORD CONNECTOR
26	24153	9"	14 GA. YELLOW WIRE
27	24155	6"	14 GA. BROWN WIRE

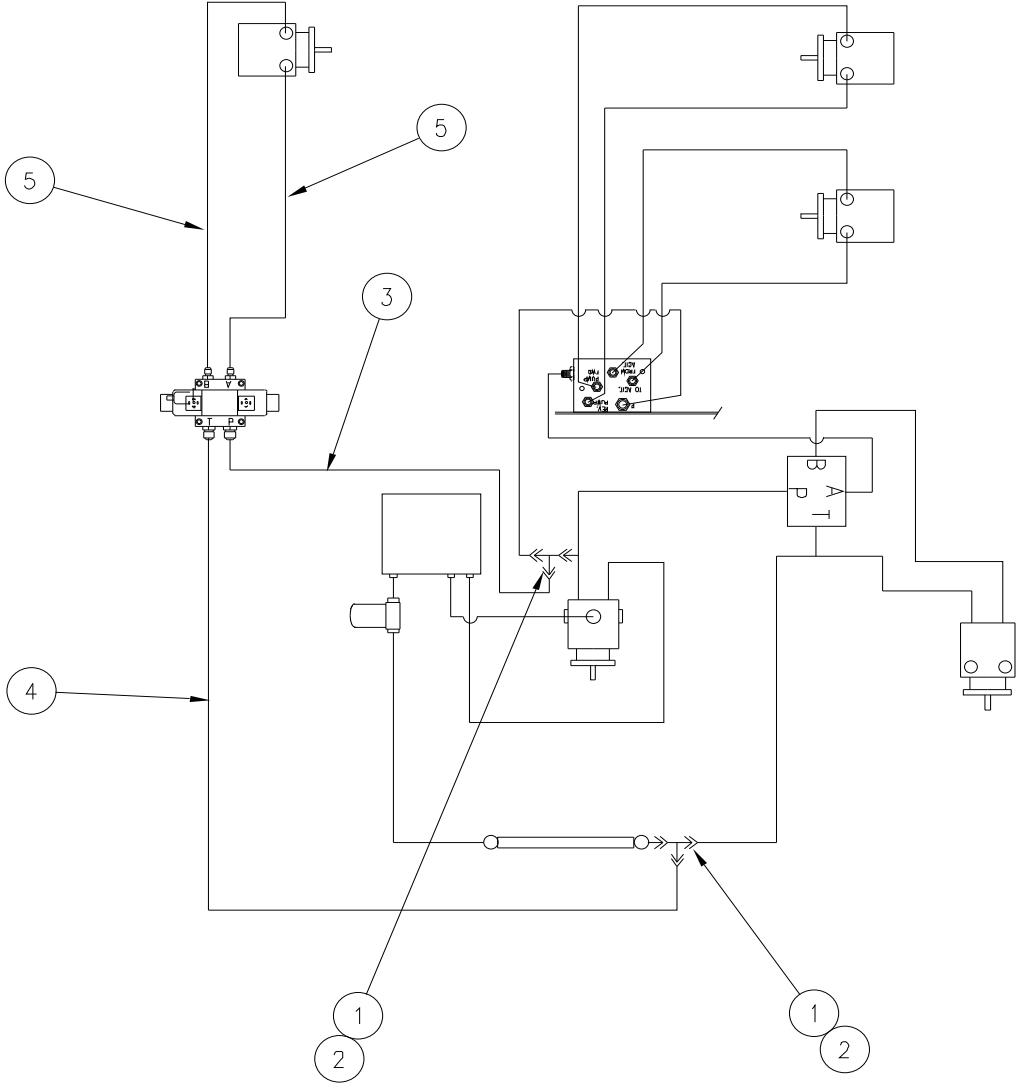
SUPER SHOT 125--HYDRAULIC SCHEMATIC-PART NUMBER 26679



SUPER SHOT125--HYDRAULIC SCHEMATIC-PART NUMBER 26679

ITEM	PART NUMBER	QTY.	DESCRIPTION
1	29932	1	1/2" STR THRD O-RING RUN TEE
2	AX6-8FJ9-6FJ9-90-74	1	HYD HOSE ASSY
3	AX8-8FJ9-8FJ9-30-70	1	HYD HOSE ASSY
4	AX6-6FJ-6FJ-24	1	3/8 X 24" HYD HOSE
5	AX6-6FJ-6FJ9L-29	1	HYD HOSE

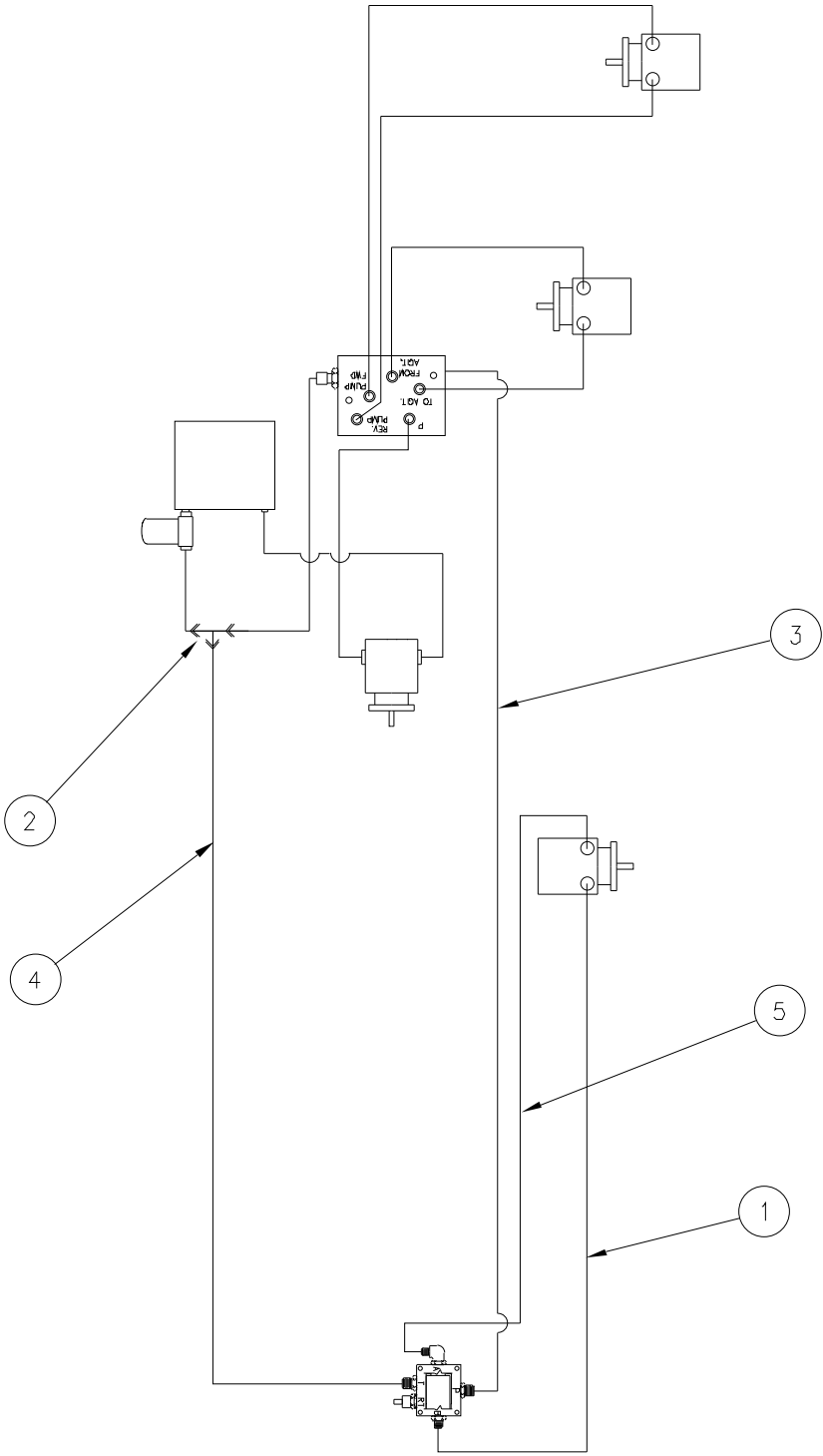
SUPER SHOT125 COMPRESS--HYDRAULIC SCHEMATIC-PART NUMBER 26684



SUPER SHOT COMPRESS 125--HYDRAULIC SCHEMATIC-PART NUMBER 26684

ITEM	PART NUMBER	QTY.	DESCRIPTION
1	29932	1	1/2" STR THRD O-RING RUN TEE
2	AX6-8FJ9-6FJ9-90-74	1	HYD HOSE ASSY
3	AX8-8FJ9-8FJ9-30-70	1	HYD HOSE ASSY
4	AX6-6FJ-6FJ-24	1	3/8 X 24" HYD HOSE
5	AX6-6FJ-6FJ9L-29	1	HYD HOSE

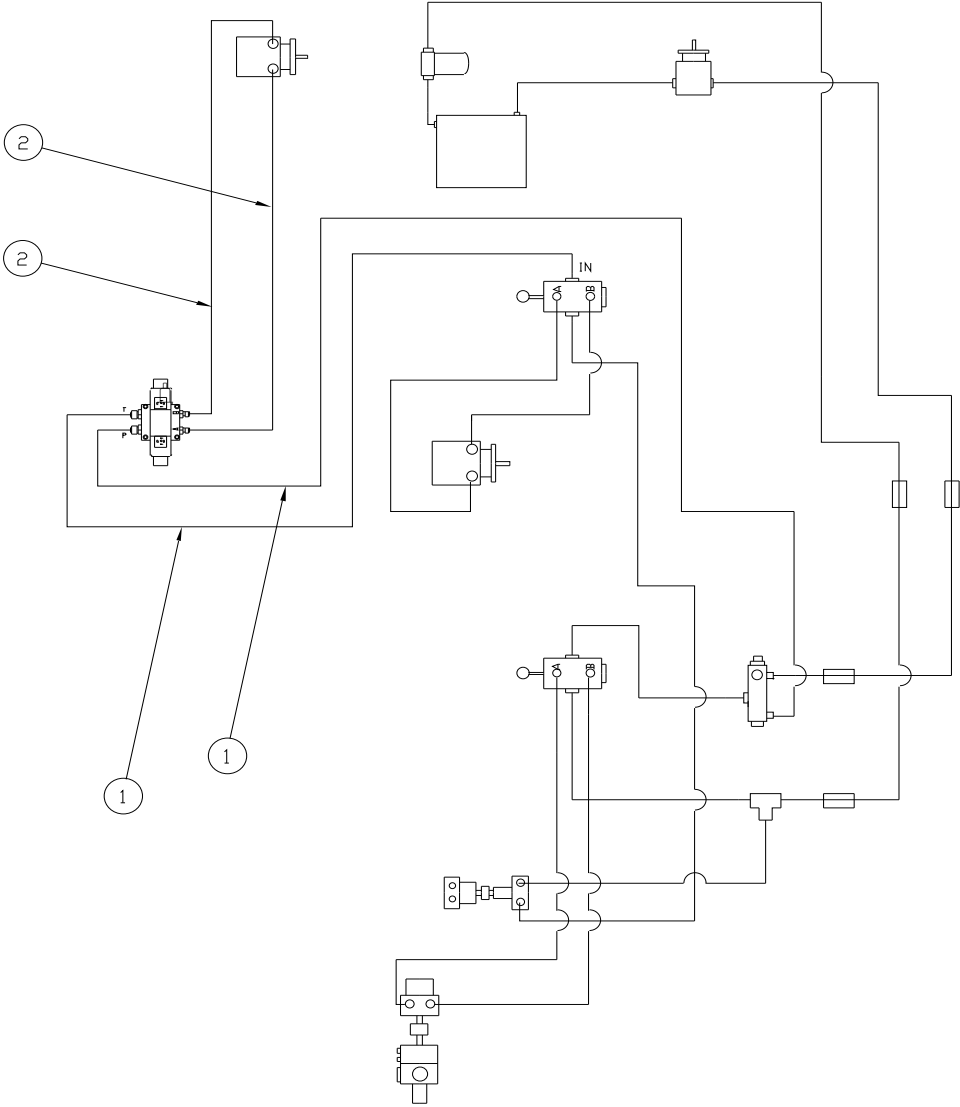
SUPER SHOT 250--HYDRAULIC SCHEMATIC-PART NUMBER 26693



SUPER SHOT 250--HYDRAULIC SCHEMATIC-PART NUMBER 26693

NUMBER	PART NUMBER	QTY	DESCRIPTION
1	AX6-6FJ-6FJ9L-29	1	3/8" HYD HOSE 29" LONG
2	29932	1	1/2 STR THRD O-RING RUN TEE
3	AX6-8FJ9-6FJ9-90-74	1	3/8" HYD. HOSE ASSY 74" LONG
4	AX8-8FJ9-8FJ9-30-70	1	1/2" HYD HOSE ASSY 70" LONG
5	AX6-6FJ-6FJ-24	1	3/8 X 24" HYD HOSE

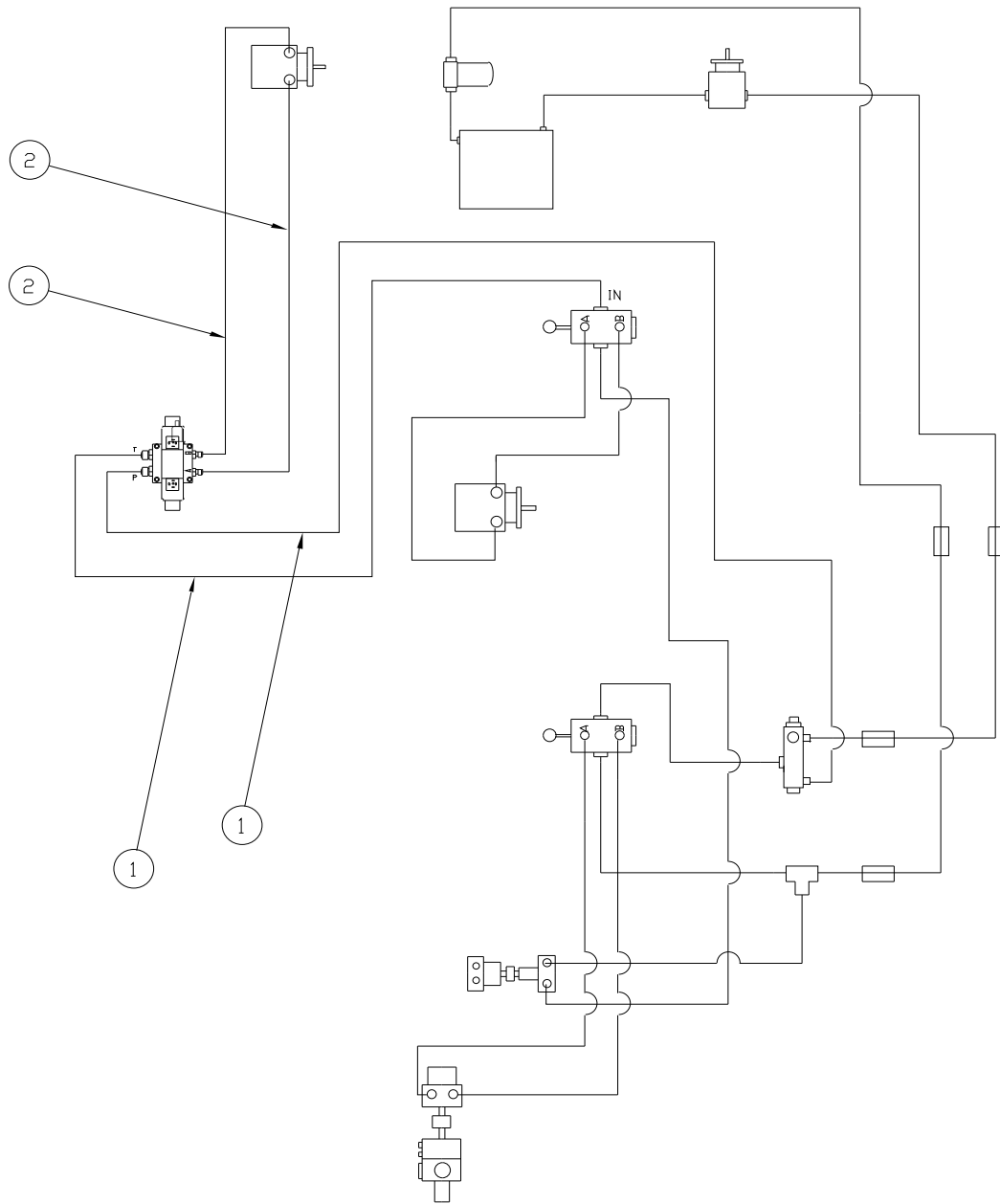
EZ POUR 100DC & 200DC -- HYDRAULIC SCHEMATIC-PART NUMBER 26680



EZ POUR 100DC & 200DC -- HYDRAULIC SCHEMATIC-PART NUMBER 26680

ITEM	PART NUMBER	QTY.	DESCRIPTION
1	AX6-6FJ-6FJ-18	1	HYDRAULIC HOSE ASSY 3/8" X 18"
2	AX6-6FJ-6FJ-130	2	HYDRAULIC HOSE ASSY 3/8" X 130"

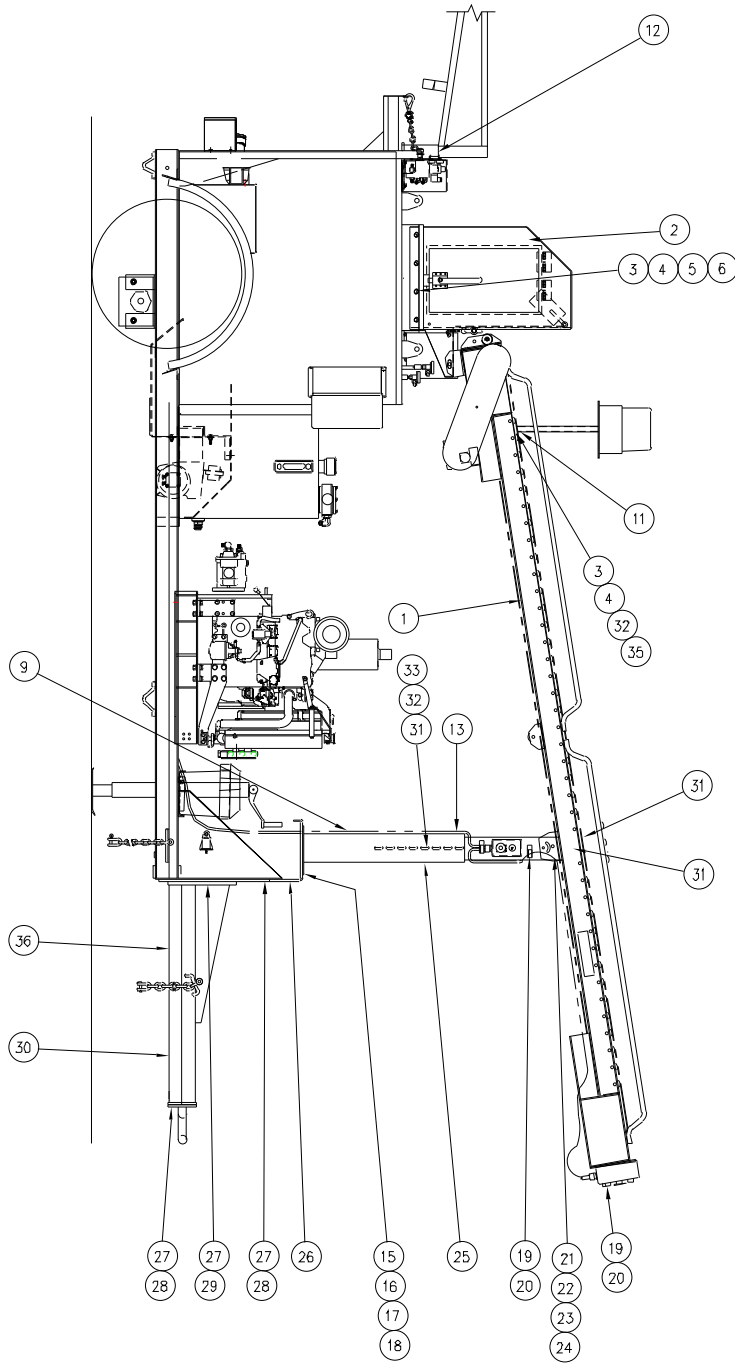
EZ POUR MELTER 400-HYDRAULIC SCHEMATIC-PART NUMBER 26683



EZ POUR MELTER 400-HYDRAULIC SCHEMATIC-PART NUMBER 26683

ITEM	PART NUMBER	QTY.	DESCRIPTION
1	AX6-6FJ-6FJ-36	2	HYDRAULIC HOSE ASSY 3/8" X 36"
2	AX6-6FJ-6FJ-130	2	HYDRAULIC HOSE ASSY 3/8" X 130"

SUPER SHOT 125 (43600)-PART NUMBER 51210



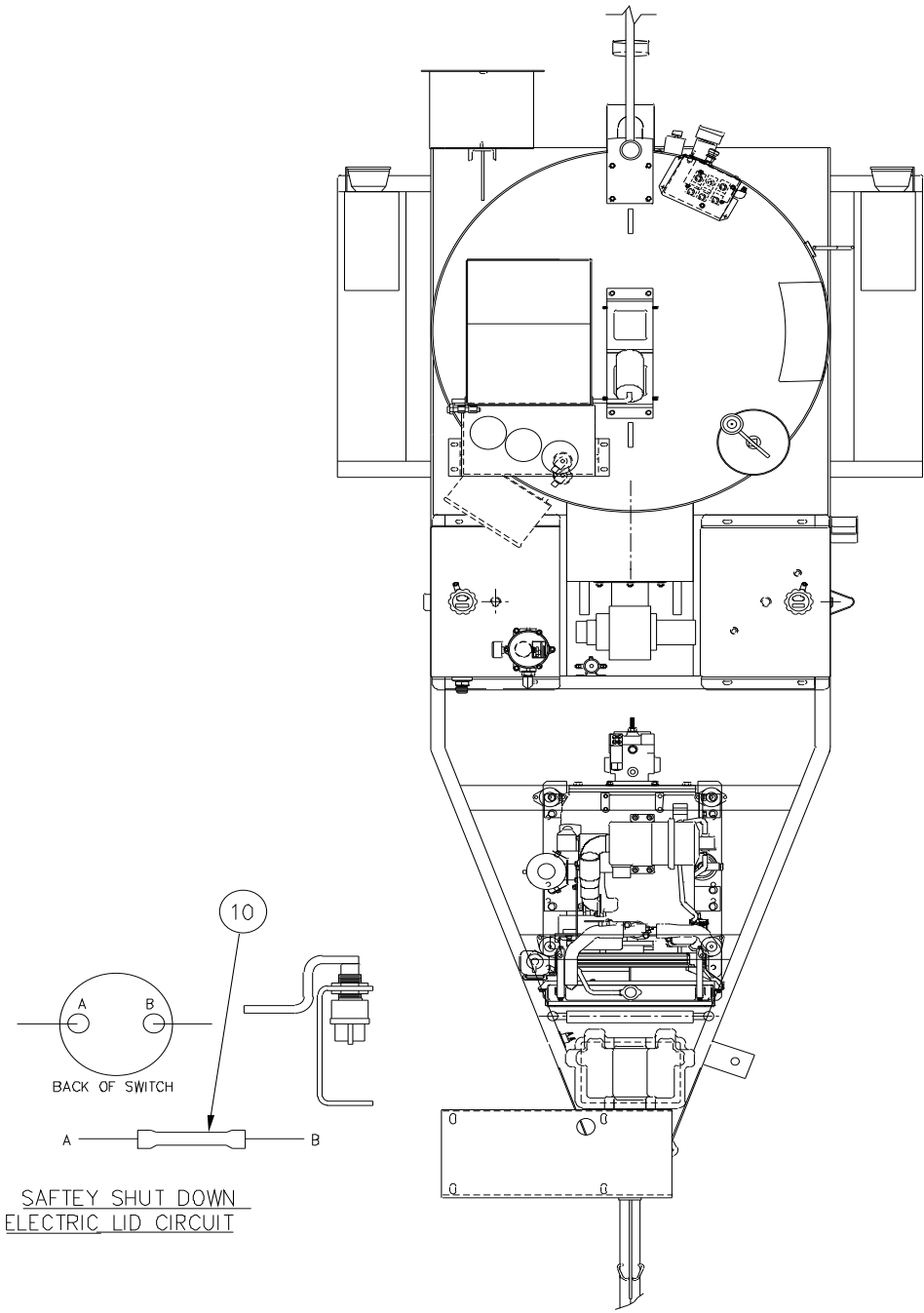
SUPER SHOT 125 (43600)-PART NUMBER 51210

ITEM	PART NUMBER	QTY.	DESCRIPTION
1	51110	1	CONVEYOR ASSEMBLY
2	51290	1	SPLASH BOX ASSEMBLY
3			N/A
4			N/A
5	28672	24	3/8" FLATWASHER
6	28732	10	3/8"-16 NC X 1-1/4" BOLT
7			N/A
8			N/A
9			N/A
10			N/A
11	51201	1	OPTION-STROBE LIGHT MTG. BRACKET
12	51181	1	BOOM BASE ASSEMBLY
13	26073	1	BLACK WIRE TIE
14			N/A
15	28504	8	1/2"-13 NC HEX NUT
16	28649	8	1/2" LOCKWASHER
17	28674	16	1/2" FLAT WASHER
18	28762	8	1/2"-13 NC X 1-1/4" BOLT
19	28821	8	#10-32 NYLON NUT
20	28844	8	#10-32 X 3/4' SCREW
21	32018	3	COVER CLAMP
22	28500	2	1/4"-20 HEX NUT
23	28645	2	1/4" LOCKWASHER
24	28701	2	1/4"-20 X 3/4" BOLT
25	51114	1	FRONT SUPPORT

SUPER SHOT 125 (43600)-PART NUMBER 51210

ITEM	PART NUMBER	QTY.	DESCRIPTION
26	51178	1	PINTLE PLATE
27	28529	16	5/8"-11 ESNA LOCK NUT
28	28972	10	5/8"-11 X 2 GRADE 8 BOLT
29	28781	6	5/8"-11 X 3 GRADE 8 BOLT
30	20150	1	OPTION-HITCH EXTENSION-LONG
31			N/A
32	28672	9	3/8" FLAT WASHER
33	28732	14	3/8"-16 NC X 1-1/4"
34			N/A
35			N/A
*30	20140	1	OPTION-HITCH EXTENSION-SHORT

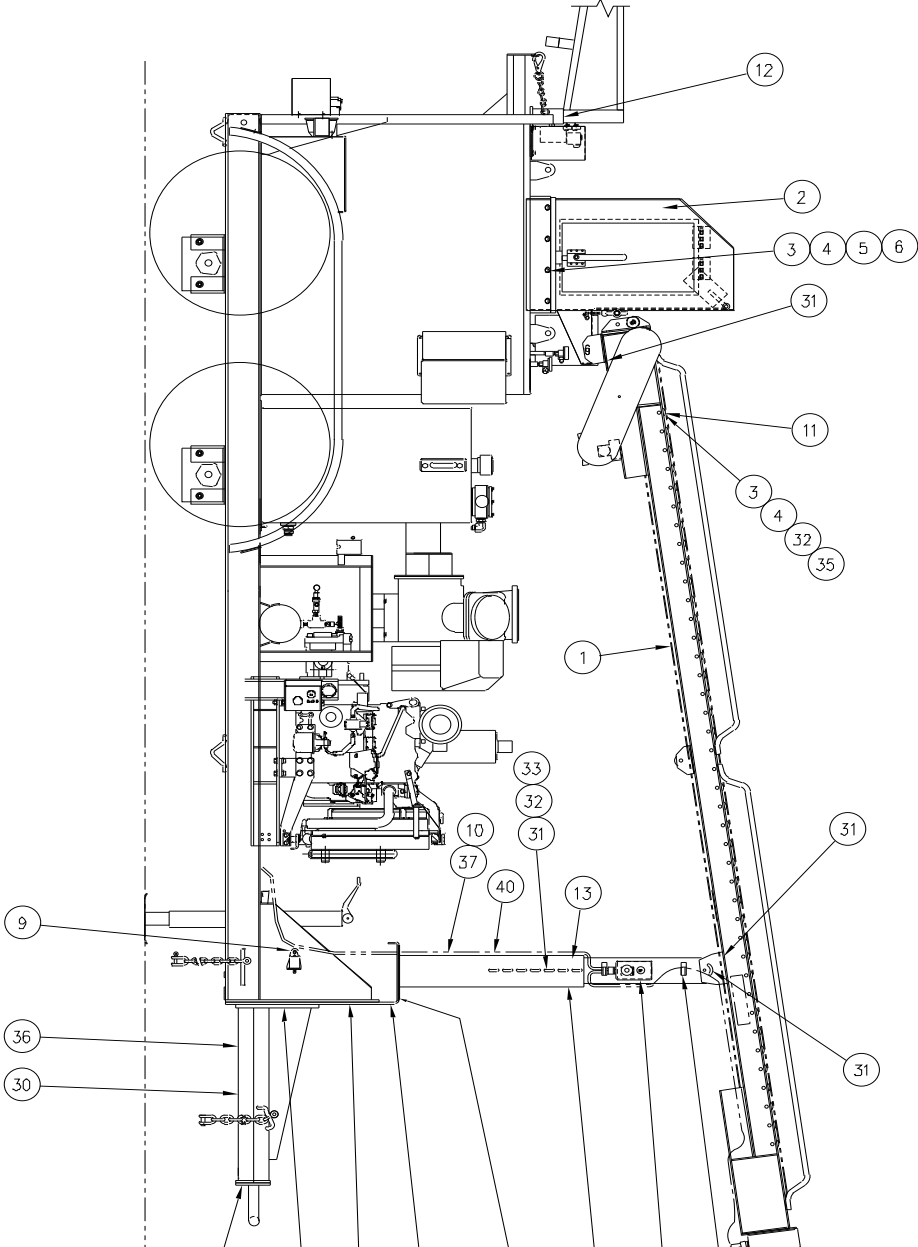
SUPER SHOT 125 CONVEYOR KIT (43600)-PART NUMBER 51210



SUPER SHOT 125 CONVEYOR KIT (43600)-PART NUMBER 51210

ITEM	PART NUMBER	QTY.	DESCRIPTION
1			N/A
2	26073	6	BLACK WIRE TIE
3			N/A
4	28702	2	HEX HEAD BOLT 1/4"-20 NC X 1"
5	28500	6	HEX HEAD BOLT 1/4"-20 NC
6	28645	6	1/4" SPLIT LOCKWASHER
7	43955	1	HYDRAULIC VALVE
8	28670	4	1/4" FLAT WASHER
9	28964	4	1/4"-20 X 3-1/2" SCKT. HD. BOLT
10	24029	1	BUTT CONNECTOR

SUPER SHOT 125 COMPRESSOR (43800) CONVEYOR KIT-PART NUMBER 51177



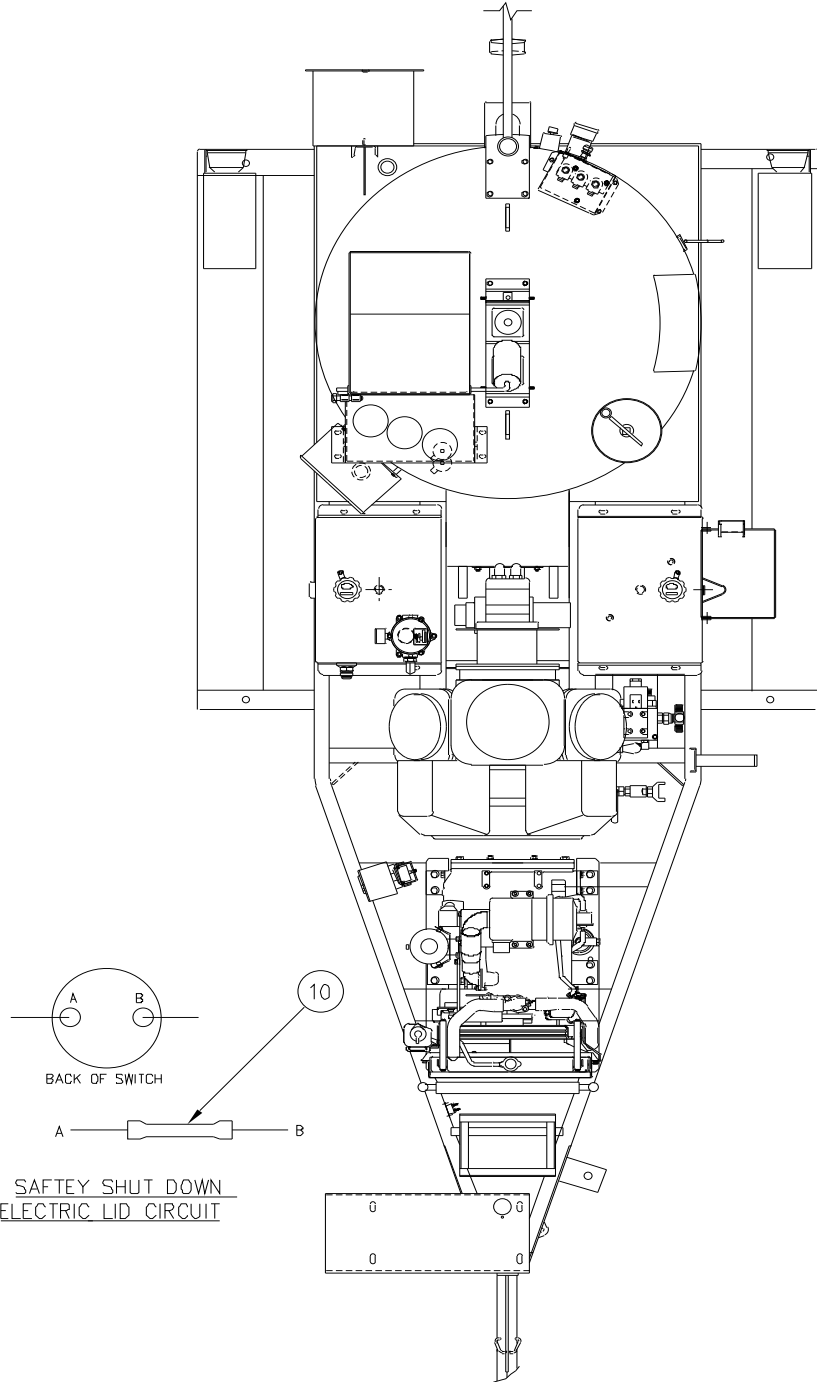
SUPER SHOT 125 COMPRESSOR (43800) CONVEYOR KIT-PART NUMBER 51177

ITEM	PART NUMBER	QTY.	DESCRIPTION
1	51110	1	CONVEYOR ASSEMBLY
2	51290	1	SPLASH BOX ASSEMBLY
3	28502	15	3/8"-16 NC HEX NUT
4	28647	18	3/8" LOCKWASHER
5	28672	30	3/8" FLATWASHER
6	28732	10	3/8"-16 NC X 1-1/4" BOLT
7			N/A
8			N/A
9	32018	4	PLASTIC COVERED CLAMP
10			N/A
11	51201	1	STROBE LIGHT MTG. BRACKET
12	51181	1	BOOM BASE ASSEMBLY
13	26073	1	BLACK WIRE TIE
14	51112	1	SHORT SUPPORT
15	28504	8	1/2"-13 NC HEX NUT
16	28649	8	1/2" LOCKWASHER
17	28674	16	1/2" FLAT WASHER
18	28762	8	1/2"-13 NC X 1-1/4" BOLT
19	28821	8	#10-32 NYLON NUT
20	28844	8	#10-32 X 3/4" SCREW
21	32018	3	COVER CLAMP
22	28500	2	1/4"-20 HEX NUT
23	28645	2	1/4" LOCKWASHER
24	28701	2	1/4"-20 X 3/4" BOLT
25	51114	1	FRONT SUPPORT

SUPER SHOT 125 COMPRESSOR (43800) CONVEYOR KIT-PART NUMBER 51177

ITEM	PART NUMBER	QTY.	DESCRIPTION
26	51178	1	PINTLE PLATE
27	28529	16	5/8"-11 ESNA LOCKNUT
28	28972	8	5/8"-11 X 2" GRADE 8 BOLT
29	28781	8	5/8"-11 X 3" GRADE 8 BOLT
30	20150	1	OPTION-HITCH EXTENSION-LONG
31	28526	30	3/8"-16 NC NYLON NUT
32	28673	16	3/8" FLAT WASHER
33	28732	10	3/8"-16 NC X 1-1/4"
34	28528	2	1/2"-13 NC NYLON NUT
35	28731	4	3/8"-16 NC X 1' HEX HEAD BOLT
36	28906	1	#10 SELF TAPPING SCREW
37	32019	6	PLASTIC COVERED CLAMP
38	51360	1	HYD. HOSE ASSY 1/2" X 74"
39	51358	1	HYD. HOSE ASSY 1/2" X 22"
40	26073	1	BLACK WIRE TIE
*30	20140	1	OPTION-HITCH EXTENSION-SHORT

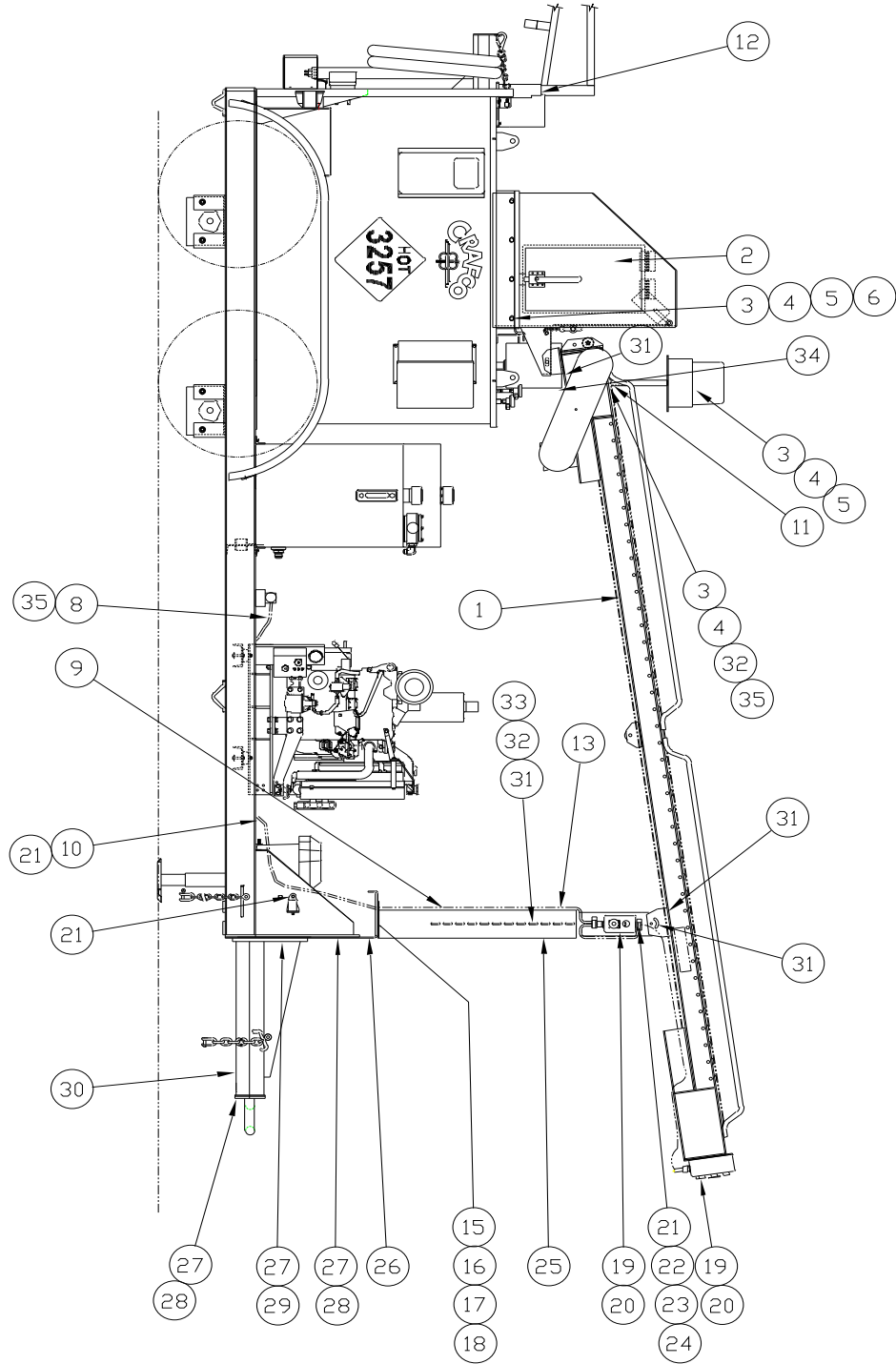
SUPER SHOT 125 COMPRESSOR (43800) CONVEYOR KIT-PART NUMBER 51177



SUPER SHOT 125 COMPRESSOR (43800) CONVEYOR KIT-PART NUMBER 51177

ITEM	PART NUMBER	QTY.	DESCRIPTION
1			N/A
2	26073	6	BLACK WIRE TIE
3			N/A
4	28702	2	HEX HEAD BOLT 1/4"-20 NC X 1"
5	28500	6	HEX HEAD BOLT 1/4"-20 NC
6	28645	6	1/4" SPLIT LOCKWASHER
7	43955	1	HYDRAULIC VALVE
8	28670	4	1/4" FLAT WASHER
9	28973	4	1/4"-20 X 2-1/2 SCKT. HD. BOLT
10	24029	1	BUTT CONNECTOR

SUPER SHOT 250 (44100) CONVEYOR KIT-PART NUMBER 51225



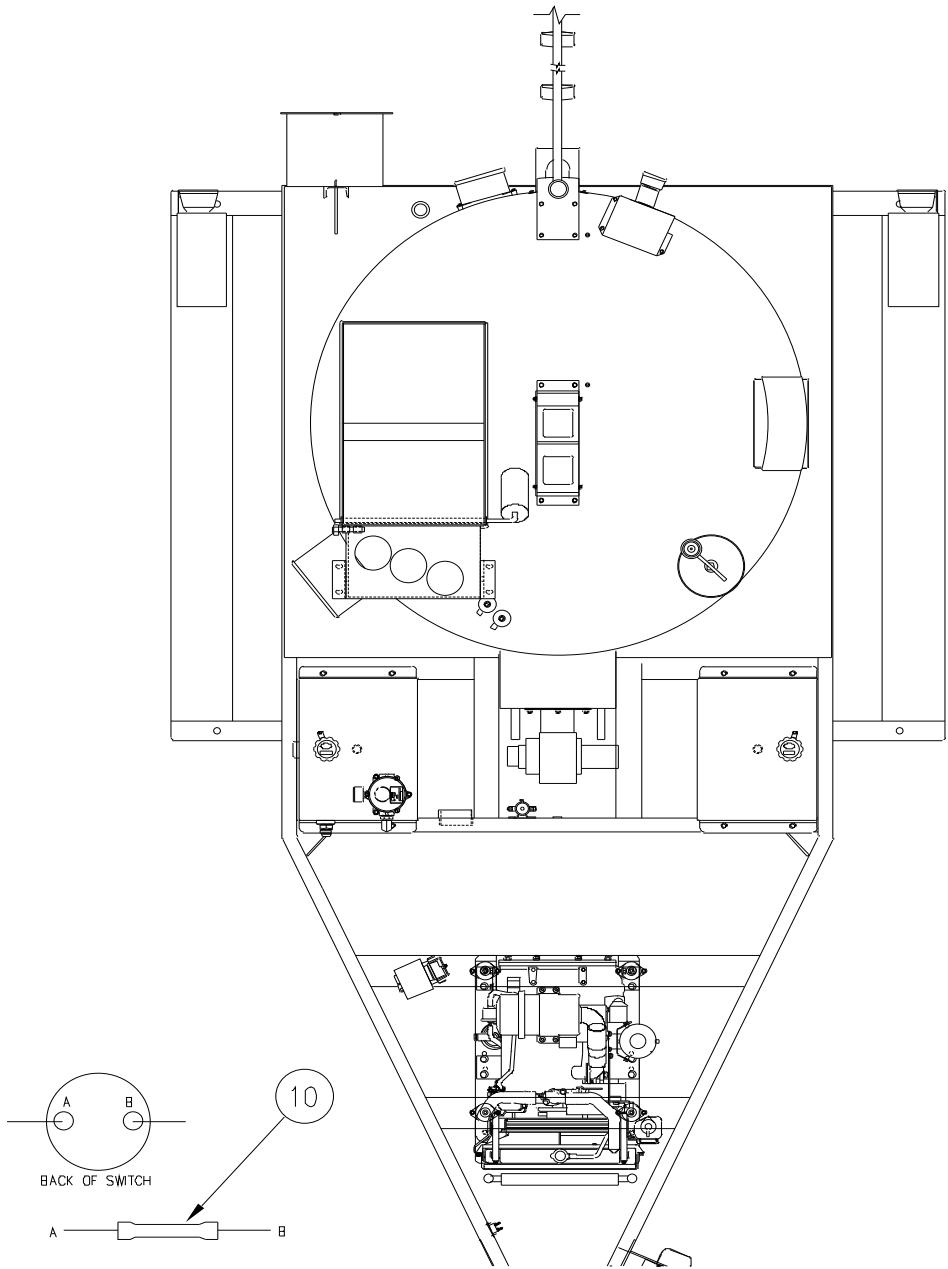
SUPER SHOT 250 (44100) CONVEYOR KIT-PART NUMBER 51225

ITEM	PART NUMBER	QTY.	DESCRIPTION
1	51110	1	CONVEYOR ASSY
2	51260	1	SPLASH BOX ASSEMBLY
3	28502	13	3/8"-16 HEX NUT
4	28647	13	3/8" LOCKWASHER
5	28672	26	3/8" FLAT WASHER
6	28732	10	3/8"-16 X 1-1/4" BOLT
7	51163	1	SPRING-CLIP HOLDER
8	51360	1	HYD. HOSE 1/2" X 74" LG
9	32019	8	PLASTIC COVERED CLAMP
10	28986	8	#10 SELF TAPPING SCREW
11	51201	1	OPTION-STROBE LIGHT MTG BRKT KIT
12	51181	1	BOOM BASE ASSY
13	26073	1	BLACK WIRE TIE
14	51112	1	SHORT SUPPORT
15	28504	8	1/2"-13 HEX NUT
16	28649	8	1/2" LOCKWASHER
17	28674	16	1/2" FLAT WASHER
18	28762	8	1/2"-13 X 1-1/4" BOLT
19	28821	8	#10-32 NYLON NUT
20	28844	8	#10-32 X 3/4" SCREW
21	32018	4	COVER CLAMP
22	28500	2	1/4"-20 HEX NUT
23	28645	2	1/4" LOCKWASHER
24	28701	2	1/4"-20 X 3/4" BOLT
25	51114	1	FRONT SUPPORT

SUPER SHOT 250 (44100) CONVEYOR KIT-PART NUMBER 51225

NUMBER	PART NUMBER	QTY	DESCRIPTION
26	51226	1	PINTLE PLATE
27	28529	16	5/8"-11 ESNA LOCKNUT
28	28972	8	5/8"-11 X 2" GRADE 8 BOLT
29	28781	4	5/8"-11 X 3" GRADE 8 BOLT
30	20150	1	OPTION-HITCH EXTENSION-LONG
31	28526	22	3/8"-16 NC NYLON NUT
32	28673	10	3/8" FLAT WASHER
33	28732	10	3/8"-16 NC X 1-1/4"
34	28528	2	1/2"-13 NC NYLON NUT
35	51358	1	HYD. HOSE 1/2" X 22" LG.
*30	20140	1	OPTION-HITCH EXTENSION-SHORT

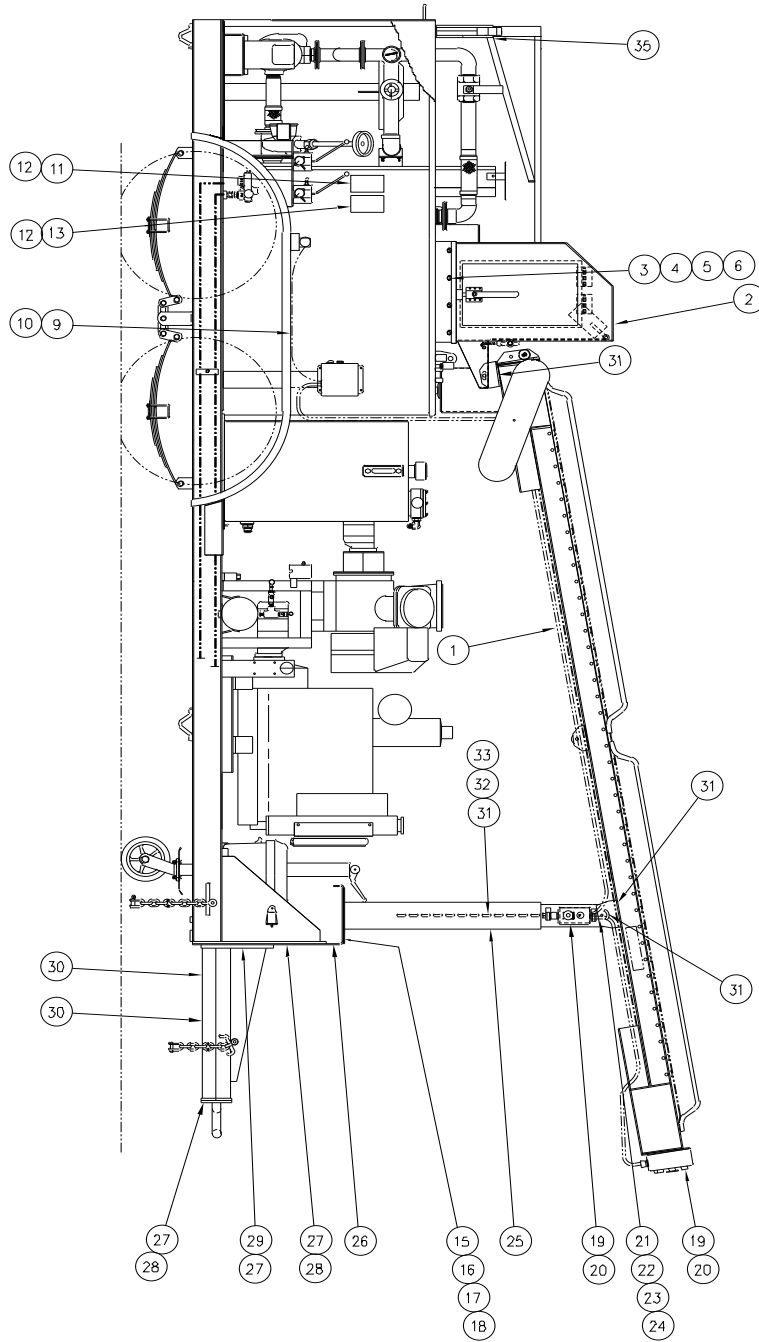
SUPER SHOT 250 (44100) CONVEYOR KIT-PART NUMBER 51225



SUPER SHOT 250 (44100) CONVEYOR KIT-PART NUMBER 51225

ITEM	PART NUMBER	QTY.	DESCRIPTION
1	AX6-6FJ-6FJ-130	2	3/8" X 130" HYDRAULIC HOSE
2	26073	12	BLACK WIRE TIE
3	40012	1	EXISTING HOSE
4	29872	1	ADAPTER
5	51145	1	HYDRAULIC VALVE
6	28500	4	1/4"-20 HEX NUT
7	28645	4	LOCKWASHER
8	28670	4	1/4" FLAT WASHER
9	28973	4	1/4"-20 X 2-1/2" SOCKET HD SCREW
10	28964	4	1/4"-20 X 3-1/2" SOCKET HD SCREW

EZ POUR DIESEL100 DIESEL COMPRESSOR (42600)-PART NUMBER 51205



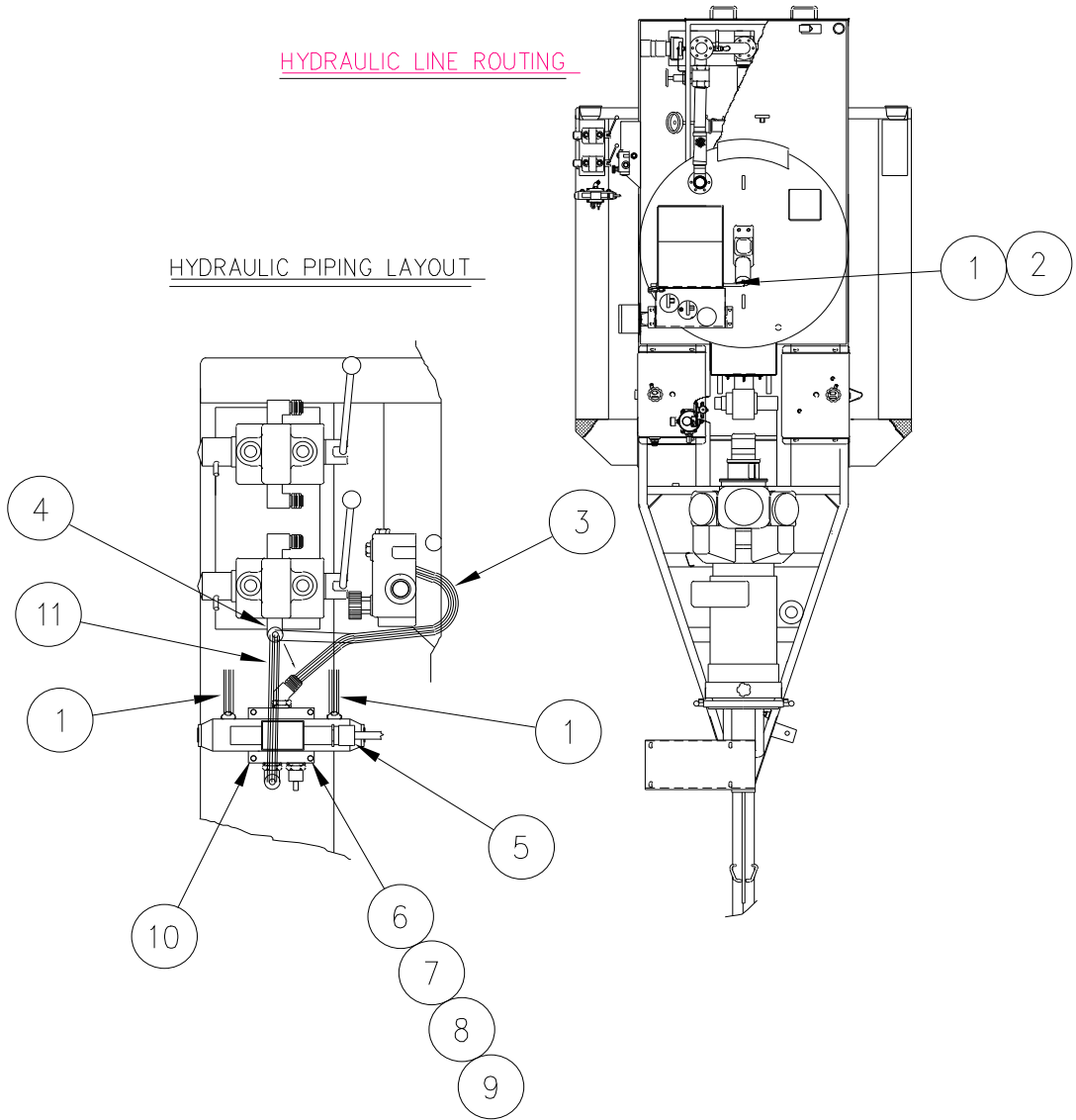
EZ POUR DIESEL100 DIESEL COMPRESSOR (42600)-PART NUMBER 51205

ITEM	PART NUMBER	QTY.	DESCRIPTION
1	51110	1	CONVEYOR ASSEMBLY
2	51290	1	SPLASH BOX ASSEMBLY
3	28502	10	3/8"-16 NC HEX NUT
4	28647	10	3/8" LOCKWASHER
5	28672	20	3/8" FLATWASHER
6	28732	10	3/8"-16 NC X 1-1/4" BOLT
7			N/A
8			N/A
9	32019	2	PLASTIC COVERED CLAMP
10	28986	2	#10 SELF TAPPING SCREW
11	26173	1	PUMP DECAL
12	28989	8	1/8" POP-RIVET
13	41149	1	MIXER DECAL
14	51112	1	SHORT SUPPORT
15	28504	8	1/2"-13 NC HEX NUT
16	28649	8	1/2" LOCKWASHER
17	28674	16	1/2" FLAT WASHER
18	28762	8	1/2"-13 NC X 1-1/4" BOLT
19	28821	8	#10-32 NYLON NUT
20	28844	8	#10-32 X 3/4" SCREW
21	32018	3	COVER CLAMP
22	28500	2	1/4"-20 HEX NUT
23	28645	2	1/4" LOCKWASHER
24	28701	2	1/4"-20 X 3/4" BOLT
25	51114	1	FRONT SUPPORT

EZ POUR DIESEL100 DIESEL COMPRESSOR (42600)-PART NUMBER 51205

ITEM	PART NUMBER	QTY.	DESCRIPTION
26	51178	1	PINTLE PLATE
27	28529	16	5/8"-11 ESNA LOCKNUT
28	28972	10	5/8"-11 X 2" GRADE 8 BOLT
29	28781	4	5/8"-11 X 3" GRADE 8 BOLT
30	20150	1	OPTION-HITCH EXTENSION-LONG
31	28526	28	3/8"-16 NC NYLON NUT
32	28672	10	3/8" FLAT WASHER
33	28732	10	3/8"-16 NC X 1-1/4"
34	28528	2	1/2"-13 NC NYLON NUT
35	51181	1	BOOM BASE ASSY
*30	20140	1	OPTION-HITCH EXTENSION-SHORT

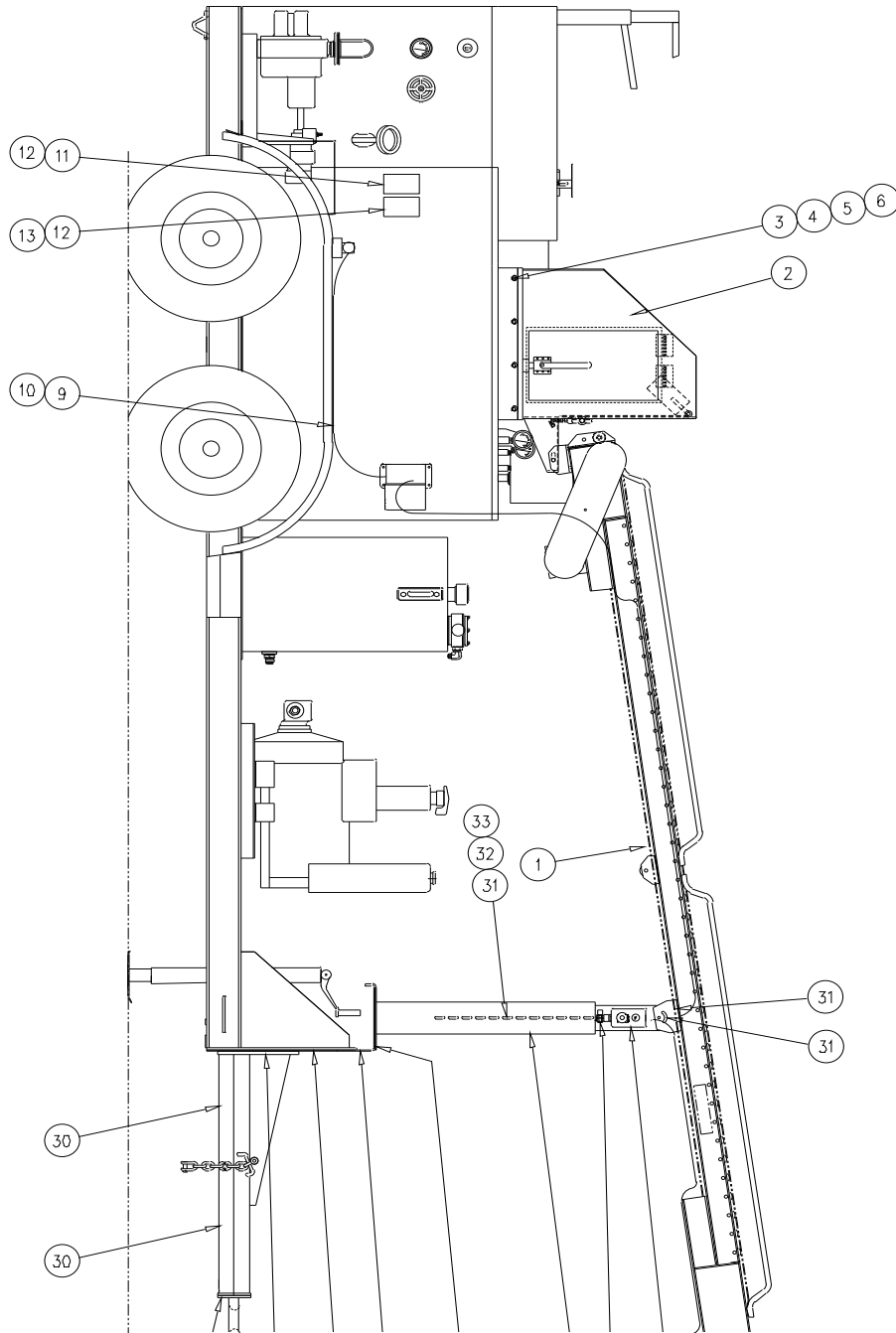
EZ POUR 100 DIESEL COMPRESSOR (42600)-PART NUMBER 51205



EZ POUR 100 DIESEL COMPRESSOR (42600)-PART NUMBER 51205

NUMBER	PART NUMBER	QTY	DESCRIPTION
1	AX6-6FJ-6FJ-130	2	3/8" X 130" HYDRAULIC HOSE
2	26073	6	BALCK WIRE TIE
3	51199	1	HYD. VALVE MOUNTING PLATE
4	28702	2	HEX HEAD BOLT 1/4"-20 NC X 1"
5	28500	6	HEX HEAD BOLT 1/4"-20 NC
6	28645	6	1/4" SPLIT LOCKWASHER
7	43955	1	HYDRAULIC VALVE
8	28670	4	1/4" FLAT WASHER
9	28973	4	1/4"-20 X 2-1/2" SCKT. HD. BOLT
10	24029	1	BUTT CONNECTOR
11	AX6-6FJ-6FJ-18	1	HYDRAULIC HOSE 3/8" X 18"

EZ POUR 100 DIESEL (41800) CONVEYOR KIT-PART NUMBER 51100



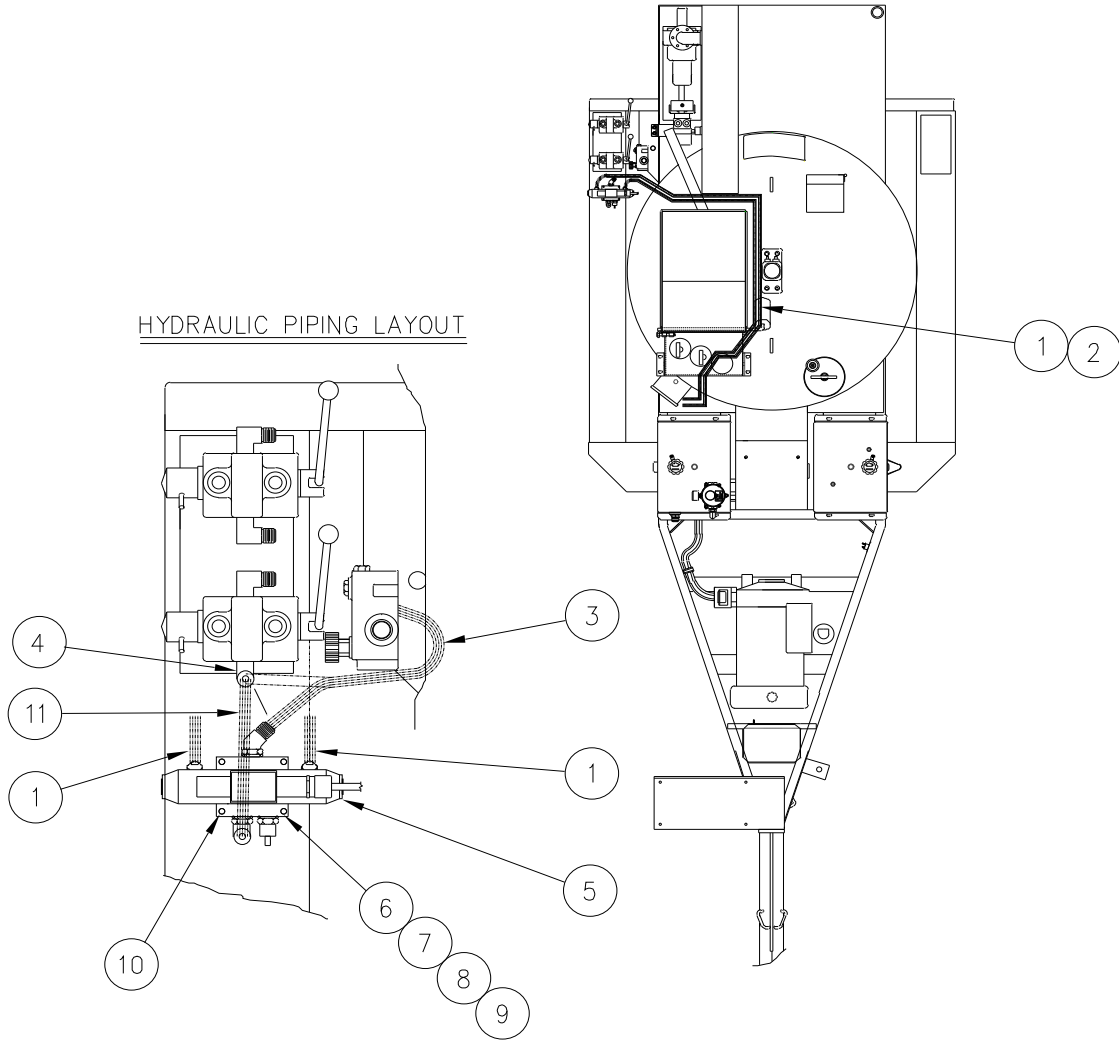
EZ POUR 100 DIESEL (41800) CONVEYOR KIT-PART NUMBER 51100

ITEM	PART NUMBER	QTY.	DESCRIPTION
1	51103	1	ROLLER
2	51141	1	CURB SIDE ROLLER BRACKET
3	51142	1	DRIVER'S SIDE ROLLER BRACKET
4	51121	1	OUTER CHAIN GUARD
5	51116	1	DRIVEN SPROCKET
6	51115	1	DRIVER SPROCKET
7	51117	1	CHAIN
8	51161	1	CONNECTING LINK
9	51118	1	INNER CHAIN GUARD
10	22027	1	HYDRAULIC MOTOR
11	51143	1	HYDRAULIC MOTOR BRACKET
12	51155	1	CONVEYOR BELT
13	51109	1	CONVEYOR SECTION
14	51111	1	TAKE-UP END
15	51108	1	END DRIVE
16	51137	2	LONG SIDE RAIL
17	51136	2	SHORT SIDE RAIL
18	51138	1	MOUNT PLATE
19	28619	1	5/16"-18 WING NUT
20	28646	1	5/16" LOCKWASHER
21	28671	4	5/16" FLAT WASHER
22	28525	1	5/16" -18 ESNA NUT
23	28716	1	5/16"-18 X 1" BOLT
24	28641	12	3/8" FLAT HARDENED WASHER
25	28647	4	3/8" LOCK WASHER

EZ POUR 100 DIESEL (41800) CONVEYOR KIT-PART NUMBER 51100

ITEM	PART NUMBER	QTY.	DESCRIPTION
26	51107	1	PINTLE PLATE
27	28529	12	5/8"-11 ESNA LOCKNUT
28	28972	8	5/8"-11 X 2" GRADE 8 BOLT
29	28781	4	5/8"-11 X 3" GRADE 8 BOLT
30	20150	1	OPTION-HITCH EXTENSION-LONG
31	28526	26	3/8"-16 NC NYLON NUT
32	28672	10	3/8" FLAT WASHER
33	28732	10	3/8"-16 NC X 1-1/4"
34	28528	2	1/2"-13 NC NYLON NUT
*30	20140	1	OPTION-HITCH EXTENSION-SHORT

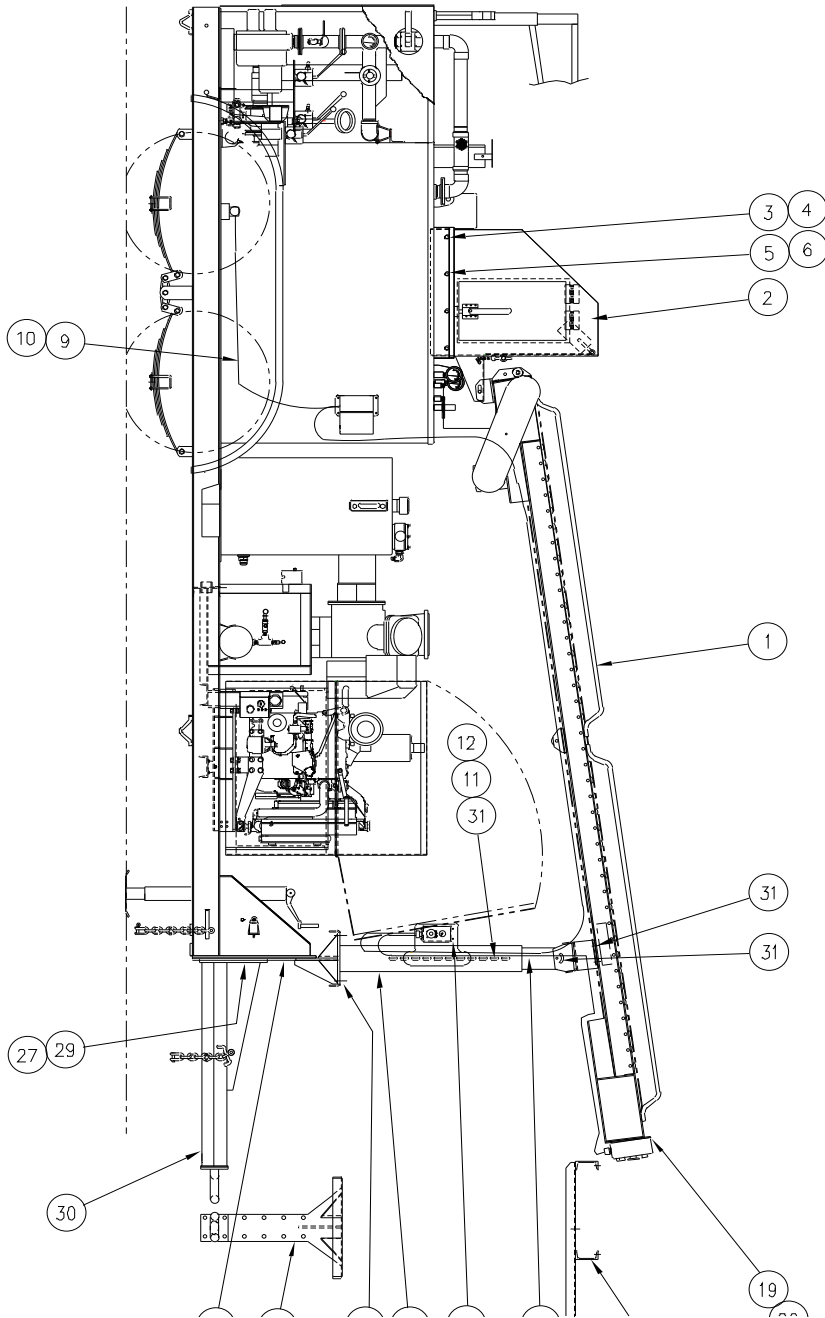
EZ POUR 200 DIESEL (41800)-PART NUMBER 51100



EZ POUR 200 DIESEL (41800)-PART NUMBER 51100

ITEM	PART NUMBER	QTY.	DESCRIPTION
1	AX6-6FJ-6FJ-130	2	3/8" X 130" HYDRAULIC HOSE
2	26073	12	BLACK WIRE TIE
3	40012	1	EXISTING HOSE
4	29872	1	ADAPTER
5	51145	1	HYDRAULIC VALVE
6	28500	4	1/4"-20 HEX NUT
7	28645	4	LOCKWASHER
8	28670	4	1/4" FLAT WASHER
9	28973	4	1/4"-20 X 2-1/2" SOCKET HD SCREW
10	28964	4	1/4"-20 X 3-1/2" SOCKET HD SCREW
11	AX6-6FJ-6FJ-18	1	HYDRAULIC HOSE ASSY. 3/8" X 18"

EZ 200 DIESEL COMPRESSOR-PART NUMBER 51176



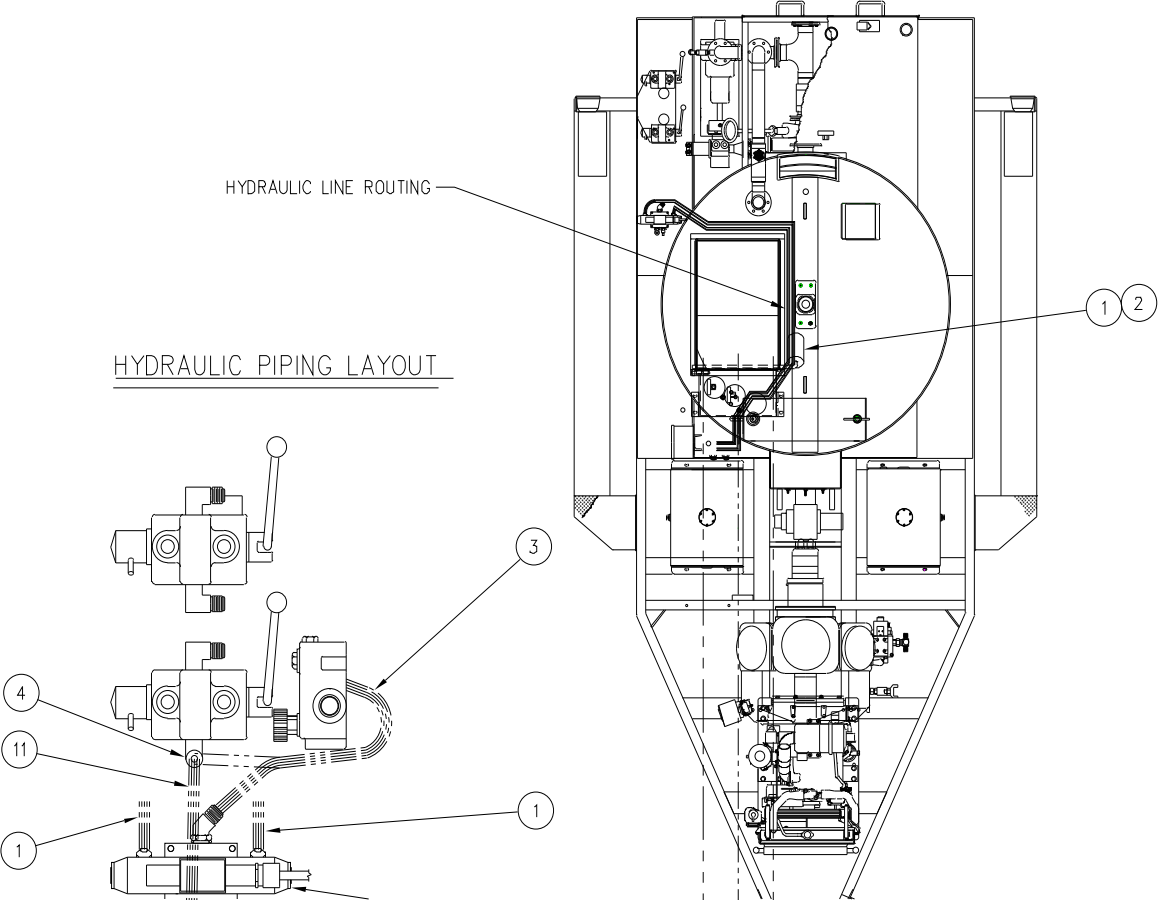
EZ 200 DIESEL COMPRESSOR-PART NUMBER 51176

ITEM	PART NUMBER	QTY.	DESCRIPTION
1	51110	1	CONVEYOR ASSEMBLY
2	51260	1	SPLASH BOX ASSEMBLY
3	28502	10	3/8"-16 HEX NUT
4	28647	10	3/8" LOCKWASHER
5	28672	20	3/8" FLAT WASHER
6	28732	10	3/8"-16 X 1-1/4" BOLT
7	51163	1	SPRING-CLIP HOLDER
8	28986	1	SELF TAPPING SCREW
9	32019	2	PLASTIC COVERED CLAMP
10	28986	2	#10 SELF TAPPING SCREW
11	28672	10	3/8" FLAT WASHER
12	28732	10	3/8"-16 NC X 1-1/4"
13	28528	2	1/2"-13 NC NYLON NUT
14	51112	1	SHORT SUPPORT
15	28504	8	1/2"-13 HEX NUT
16	28649	8	1/2" LOCKWASHER
17	28674	16	1/2" FLAT WASHER
18	28762	8	1/2"-13 X 1-1/4" BOLT
19	28821	8	#10-32 NYLON NUT
20	28844	8	#10-32 X 3/4" SCREW
21	32018	3	COVER CLAMP
22	28500	2	1/4"-20 HEX NUT
23	28645	2	1/4" LOCKWASHER
24	28701	2	1/4"-20 X 3/4" BOLT
25	51114	1	FRONT SUPPORT

EZ 200 DIESEL COMPRESSOR-PART NUMBER 51176

ITEM	PART NUMBER	QTY.	DESCRIPTION
26	51107	1	PINTLE PLATE
27	28529	12	5/8"-11 ESNA LOCKNUT
28	28972	8	5/8"-11 X 2" GRADE 8 BOLT
29	28781	4	5/8"-11 X 3" GRADE 8 BOLT
30	20150	1	OPTION-HITCH EXTENSION-LONG
31	28526	30	3/8"-16 NC NYLON NUT
*30	20140	1	OPTION-HITCH EXTENSION-SHORT

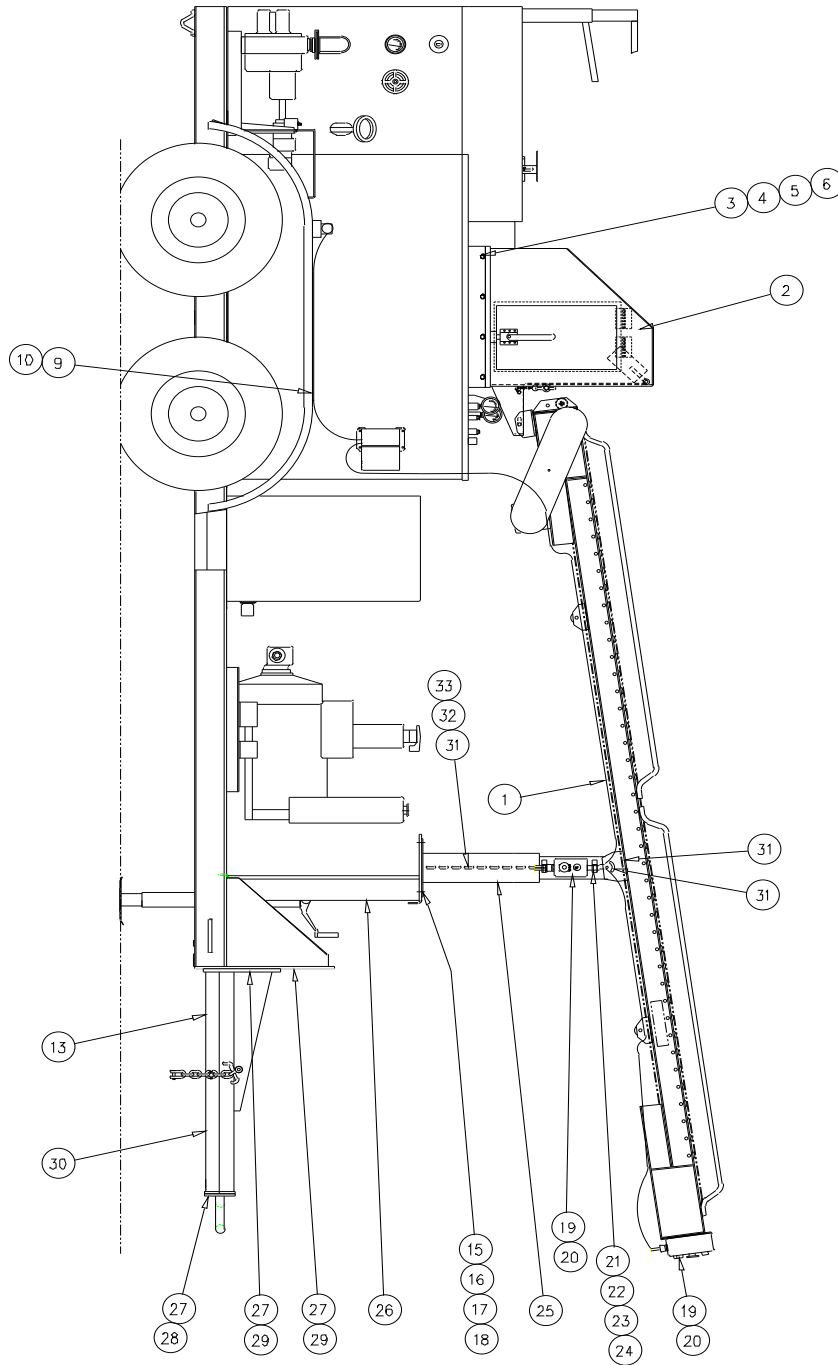
EZ POUR 200 DIESEL COMPRESSOR (43050)-PART NUMBER 51176



EZ POUR 200 DIESEL COMPRESSOR (43050)-PART NUMBER 51176

ITEM	PART NUMBER	QTY.	DESCRIPTION
1	AX6-6FJ-6FJ-130	2	3/8" x 130" HYDRAULIC HOSE
2	26073	12	BLACK WIRE TIES
3	40012	1	EXISTING HOSE
4	29872	1	EXISTING ADAPTER
5	42286	1	HYDRAULIC VALVE
6	28500	4	1/4"-20 HEX NUT
7	28645	4	1/4" LOCKWASHER
8	28670	4	1/4" FLAT WASHER
9	28973	4	1/4"-20 X 2-1/2" SOCKET HEAD SCREW
10	28964	4	1/4"-20 X 3-1/2" SOCKET HEAD SCREW
11	AX6-6FJ-6FJ-18	1	HYDRAULIC HOSE ASSY. 3/8" X 18"

**EZ POUR 400 WITHOUT ENGINE COVER CONVEYOR KIT-PART NUMBER 51175
OLD STYLE**



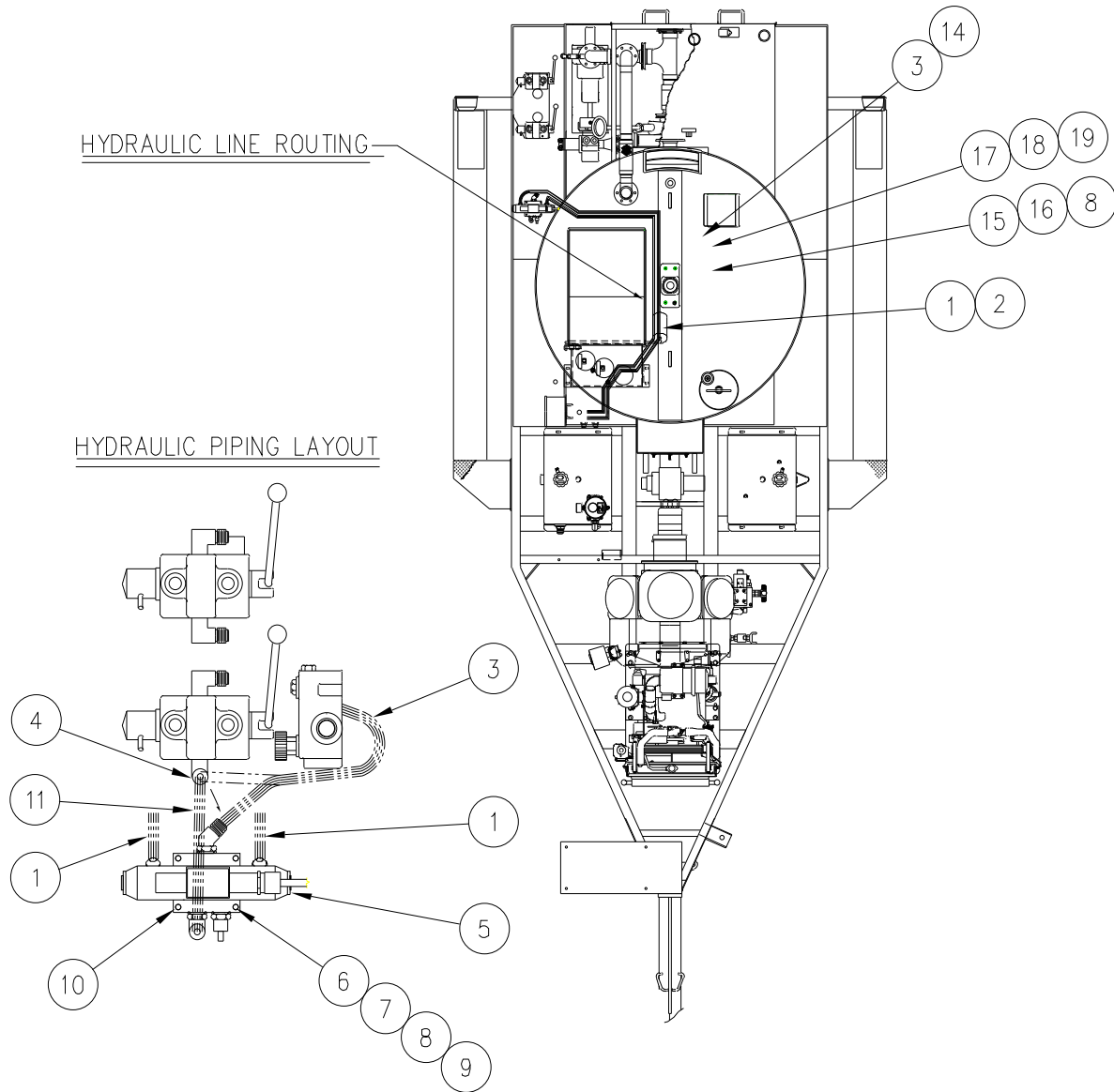
**EZ POUR 400 WITHOUT ENGINE COVER CONVEYOR KIT-PART NUMBER 51175
OLD STYLE**

ITEM	PART NUMBER	QTY.	DESCRIPTION
1	51110	1	CONVEYOR ASSEMBLY
2	51260	1	SPLASH BOX ASSEMBLY
3	28502	10	3/8"-16 HEX NUT
4	28647	10	3/8" LOCKWASHER
5	28672	20	3/8" FLAT WASHER
6	28732	10	3/8-16 X 1-1/4" BOLT
7	51163	1	SPRING-CLIP HOLDER
8	28986	1	SELF TAPPING SCREW
9	32017	3	PLASTIC COVERED CLAMP
10	28986	3	#10 SELF TAPPING SCREW
11	28962	4	1/2"-13 NC X 1-1/2" HEX HEAD BOLT
12	28528	4	1/2"-13 NC ESNA LOCK NUT
13			N/A
14	51112	1	SHORT SUPPORT
15	28504	8	1/2"-13 HEX NUT
16	28649	16	1/2" LOCKWASHER
17	28674	24	1/2" FLAT WASHER
18	28761	16	1/2"-13 x 1-1/4" BOLT
19	28821	8	#10-32 NYLON NUT
20	28844	8	#10-32 X 3/4" SCREW
21	32018	3	COVER CLAMP
22	28500	2	1/4"-20 HEX NUT
23	28645	2	1/4" LOCKWASHER
24	28701	2	1/4"-20 X 3/4" BOLT
25	51231	1	FRONT SUPPORT

**EZ POUR 400 WITHOUT ENGINE COVER CONVEYOR KIT-PART NUMBER 51175
OLD STYLE**

ITEM	PART NUMBER	QTY.	DESCRIPTION
26	51172	1	FRONT MOUNT-LEG SUPT. ASSY.
27	28529	12	5/8"-11 ESNA LOCK NUT
28	28972	12	5/8"-11 X 2" GRADE 8 BOLT
29	28528	8	1/2"-13 NC NYLON NUT
30	20150	1	OPTION-HITCH EXTENSION-LONG
31	28526	30	3/8"-16 NC NYLON NUT
*30	20140	1	OPTION-HITCH EXTENSION-SHORT

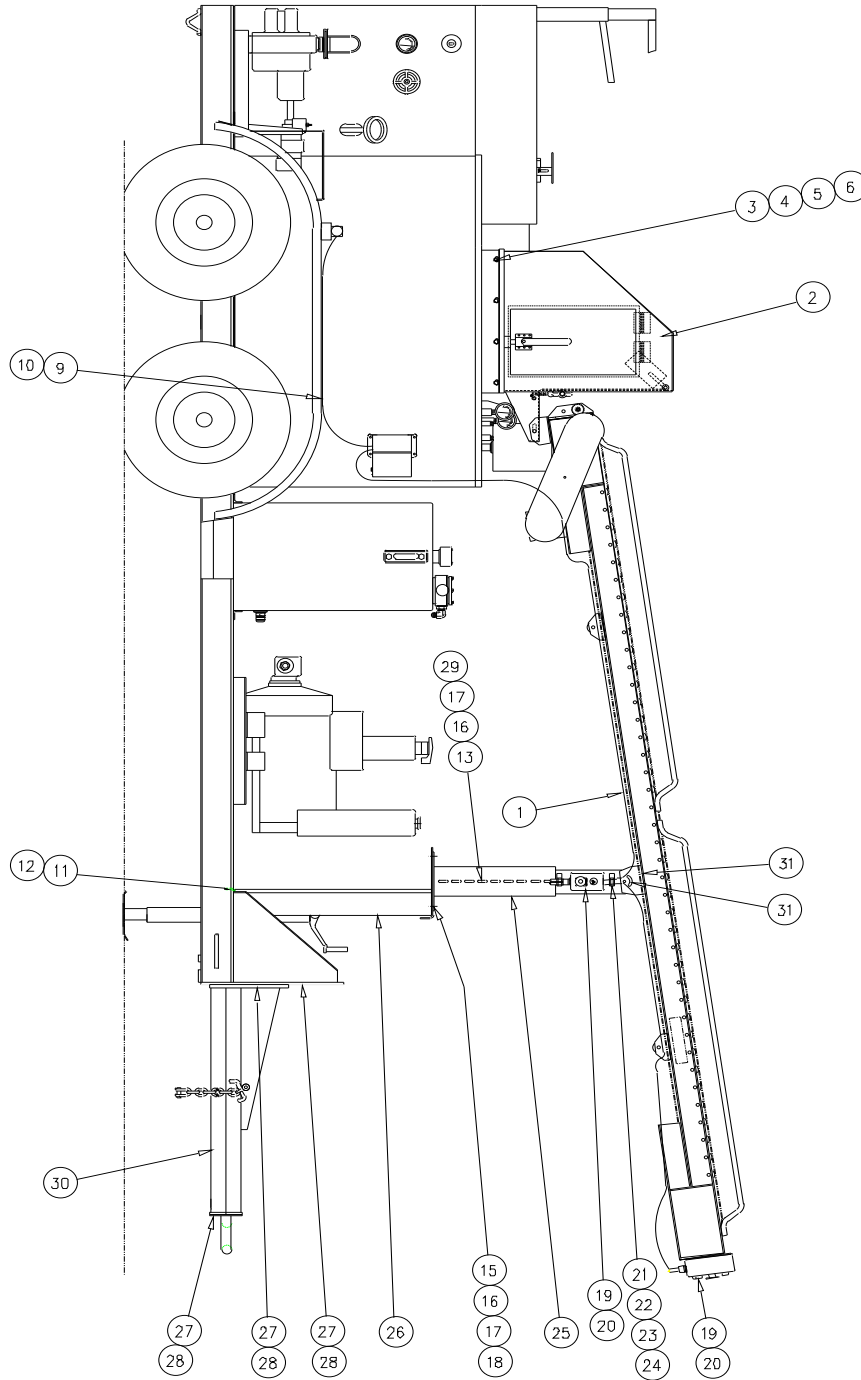
**EZ POUR 400 WITHOUT ENGINE COVER-PART NUMBER 51175
OLD STYLE**



**EZ POUR 400 WITHOUT ENGINE COVER-PART NUMBER 51175
OLD STYLE**

ITEM	PART NUMBER	QTY.	DESCRIPTION
1	AX6-6FJ-6FJ-130	2	3/8" X 130" HYDRAULIC HOSE
2	26073	12	BLACK WIRE TIE
3	40013	1	EXISTING HOSE
4	29872	1	ADAPTER
5	32017	3	COVERED CLAMP
6	51145	1	HYDRAULIC VALVE
7	28500	4	1/4"-20 HEX NUT
8	28645	6	LOCKWASHER
9	28670	4	1/4" FLAT WASHER
10	28973	4	1/4"-20 X 2-1/2" SOCKET HD SCREW
11	28964	4	1/4"-20 X 3-1/2" SOCKET HD SCREW
12	29378	1	PLATE FENDER TOP
13	AX6-6FJ-6FJ-18	1	HYDRAULIC HOSE ASSY. 3/8" X 18"
14	28986	3	#10 SELF TAPPING SCREW
15	28606	2	1/4" INSERT
16	28701	2	1/4 X 3/4 LONG HEX HEAD BOLT
17	39608	1	SAFETY SWITCH
18	39609	1	SAFETY SWITCH CAP
19	43659	1	SWITCH BRACKET

**EZ POUR 400 WITH ENGINE COVER-PART NUMBER 51220
OLD STYLE**



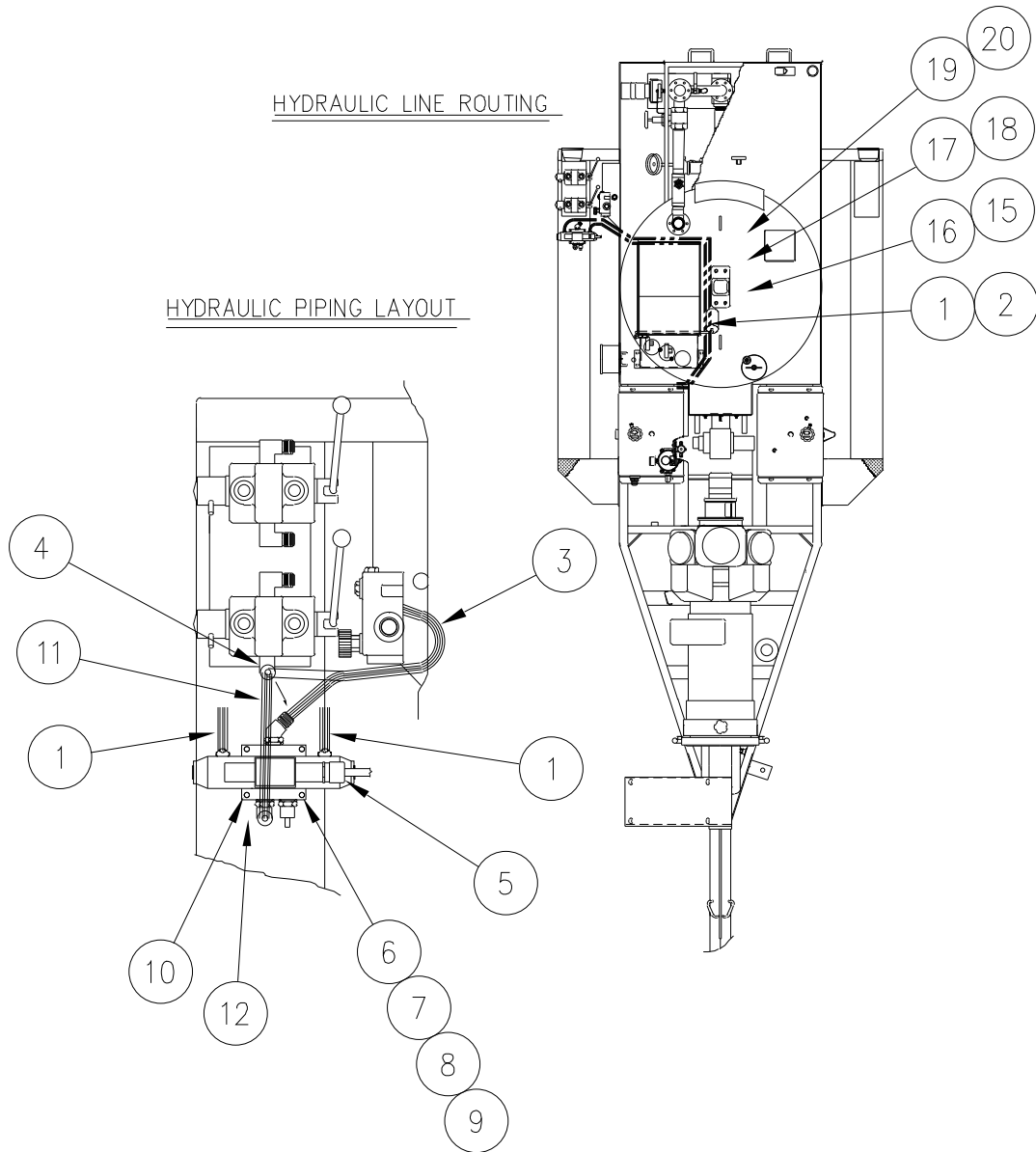
**EZ POUR 400 WITH ENGINE COVER-PART NUMBER 51220
OLD STYLE**

ITEM	PART NUMBER	QTY.	DESCRIPTION
1	51110	1	CONVEYOR ASSEMBLY
2	51260	1	SPLASH BOX ASSEMBLY
3	28502	10	3/8"-16 HEX NUT
4	28647	10	3/8" LOCKWASHER
5	28672	20	3/8" FLAT WASHER
6	28732	10	3/8-16 X 1-1/4" BOLT
7			N/A
8			N/A
9	32017	3	PLASTIC COVERED CLAMP
10	28986	3	#10 SELF TAPPING SCREW
11	28962	4	1/2"-13 NC X 1-1/2" HEX HEAD BOLT
12	28528	8	1/2"-13 NC ESNA LOCK NUT
13	28761	8	1/2"-13 NC X 1-1/4" HEX HEAD BOLT
14			N/A
15	28504	8	1/2"-13 HEX NUT
16	28649	16	1/2" LOCKWASHER
17	28674	24	1/2" FLAT WASHER
18	28762	8	1/2"-13 x 1-1/4" BOLT
19	28821	8	#10-32 NYLON NUT
20	28844	8	#10-32 X 3/4" SCREW
21	32018	3	COVER CLAMP
22	28500	2	1/4"-20 HEX NUT
23	28645	2	1/4" LOCKWASHER
24	28701	2	1/4"-20 X 3/4" BOLT
25	51231	1	FRONT SUPPORT

**EZ POUR 400 WITH ENGINE COVER-PART NUMBER 51220
OLD STYLE**

ITEM	PART NUMBER	QTY.	DESCRIPTION
26	51212	1	FRONT MOUNT-LEG SUPT. ASSY.
27	28529	12	5/8"-11 ESNA LOCK NUT
28	28972	8	5/8"-11 X 2" GRADE 8 BOLT
29	28528	10	1/2"-13 NC NYLON NUT
30	20150	1	OPTION-HITCH EXTENSION-LONG
31	28526	22	3/8"-16 NC NYLON NUT
*30	20140	1	OPTION-HITCH EXTENSION-SHORT

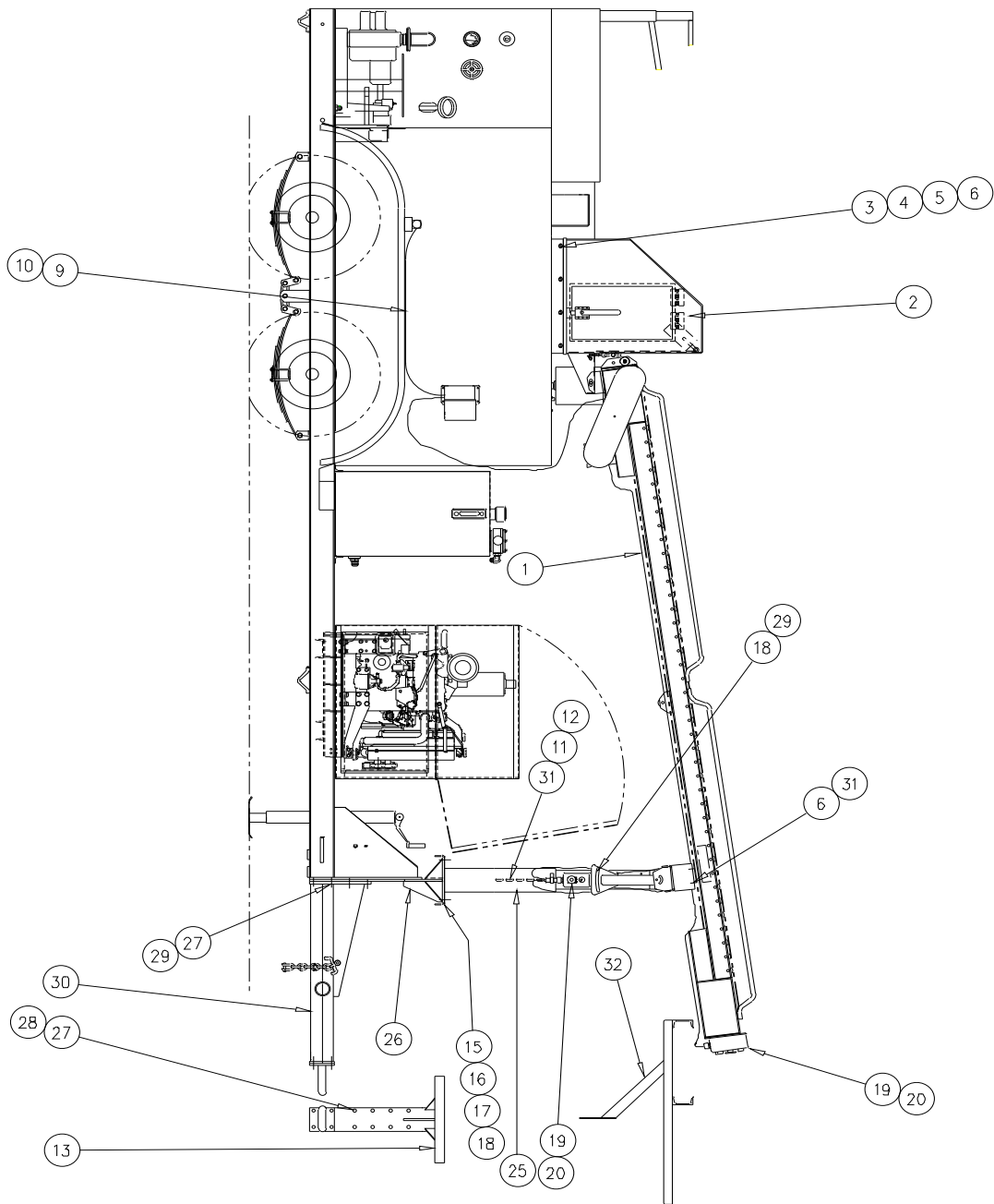
**EZ POUR 400 WITH ENGINE COVER-PART NUMBER 51220
OLD STYLE**



**EZ POUR 400 WITH ENGINE COVER-PART NUMBER 51220
OLD STYLE**

ITEM	PART NUMBER	QTY	DESCRIPTION
1	AX6-6FJ-6FJ-130	2	3/8" X 130" HYDRAULIC HOSE
2	26073	12	BLACK WIRE TIE
3	40013	1	EXISTING HOSE
4	29872	1	ADAPTER
5	32017	3	COVERED CLAMP
6	51145	1	HYDRAULIC VALVE
7	28500	4	1/4"-20 HEX NUT
8	28645	6	LOCKWASHER
9	28670	4	1/4" FLAT WASHER
10	28973	4	1/4"-20 X 2-1/2" SOCKET HD SCREW
11	28964	4	1/4"-20 X 3-1/2" SOCKET HD SCREW
12	51278	1	PLATE FENDER TOP
13	AX6-6FJ-6FJ-18	1	HYDRAULIC HOSE ASSY. 3/8" X 18"
14	28986	3	#10 SELF TAPPING SCREW
15	28606	2	1/16" INSERT
16	28701	2	1/14" - 20 X 3/4 BOLT HEX HEAD
17	39608	1	SAFETY SWITCH
18	39609	1	SAFETY SWITCH CAP
19	43659	1	SWITCH BRACKET
20	43658	1	LID BRACKET

**EZ POUR 400 WITH ENGINE COVER-PART NUMBER 51250
NEW STYLE**



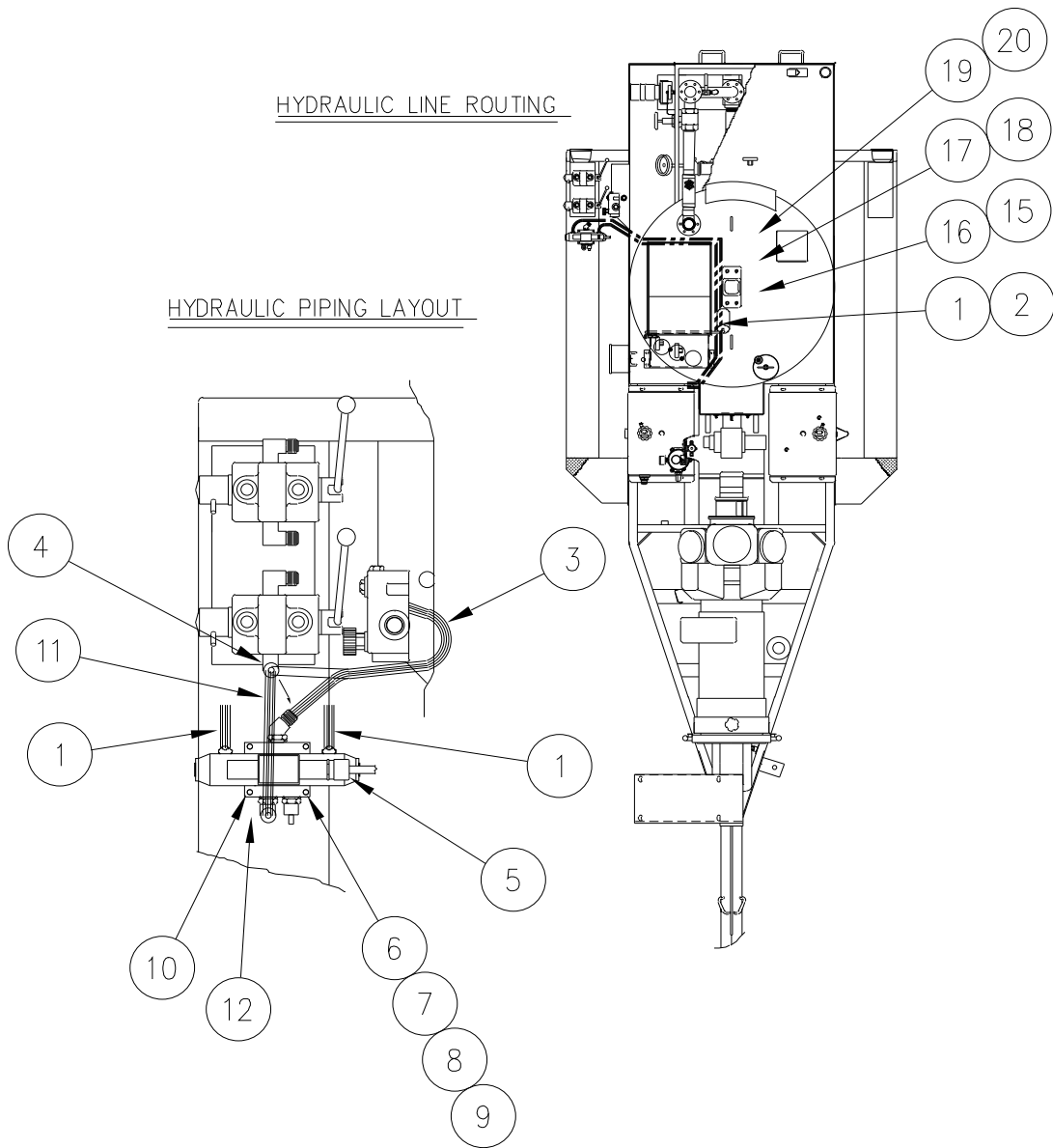
**EZ POUR 400 WITH ENGINE COVER-PART NUMBER 51250
NEW STYLE**

ITEM	PART NUMBER	QTY	DESCRIPTION
1	51110	1	CONVEYOR ASSEMBLY
2	51260	1	SPLASH BOX ASSEMBLY
3	28502	10	3/8"-16 HEX NUT
4	28647	10	3/8" LOCKWASHER
5	28672	20	3/8" FLAT WASHER
6	28732	18	3/8-16 X 1-1/4" BOLT
7			N/A
8			N/A
9	32017	3	PLASTIC COVERED CLAMP
10	28986	3	#10 SELF TAPPING SCREW
11	28962	4	1/2"-13 NC X 1-1/2" HEX HEAD BOLT
12	28528	8	1/2"-13 NC ESNA LOCK NUT
13	51253	1	FRONT LEG SUPPORT
14			N/A
15	28504	8	1/2"-13 HEX NUT
16	28649	16	1/2" LOCKWASHER
17	28674	24	1/2" FLAT WASHER
18	28762	8	1/2"-13 X 1-1/4" BOLT
19	28821	8	#10-32 NYLON NUT
20	28844	8	#10-32 X 3/4" SCREW
21	32018	3	COVER CLAMP
22	28500	2	1/4"-20 HEX NUT
23	28645	2	1/4" LOCKWASHER
24	28701	2	1/4"-20 X 3/4" BOLT
25	51113	1	FRONT SUPPORT

**EZ POUR 400 WITH ENGINE COVER-PART NUMBER 51250
NEW STYLE**

ITEM	PART NUMBER	QTY	DESCRIPTION
26			N/A
27	28529	12	5/8"-11 ESNA LOCK NUT
28	28972	8	5/8"-11 X 2" GRADE 8 BOLT
29	28528	10	1/2"-13 NC NYLON NUT
30	20150	1	OPTION-HITCH EXTENSION-LONG
*30	20140	1	OPTION-HITCH EXTENSION-SHORT
31	28526	22	3/8"-16 NC NYLON NUT
32	51255	1	UNDER BODY ANGLED SUPPORT BRACKET

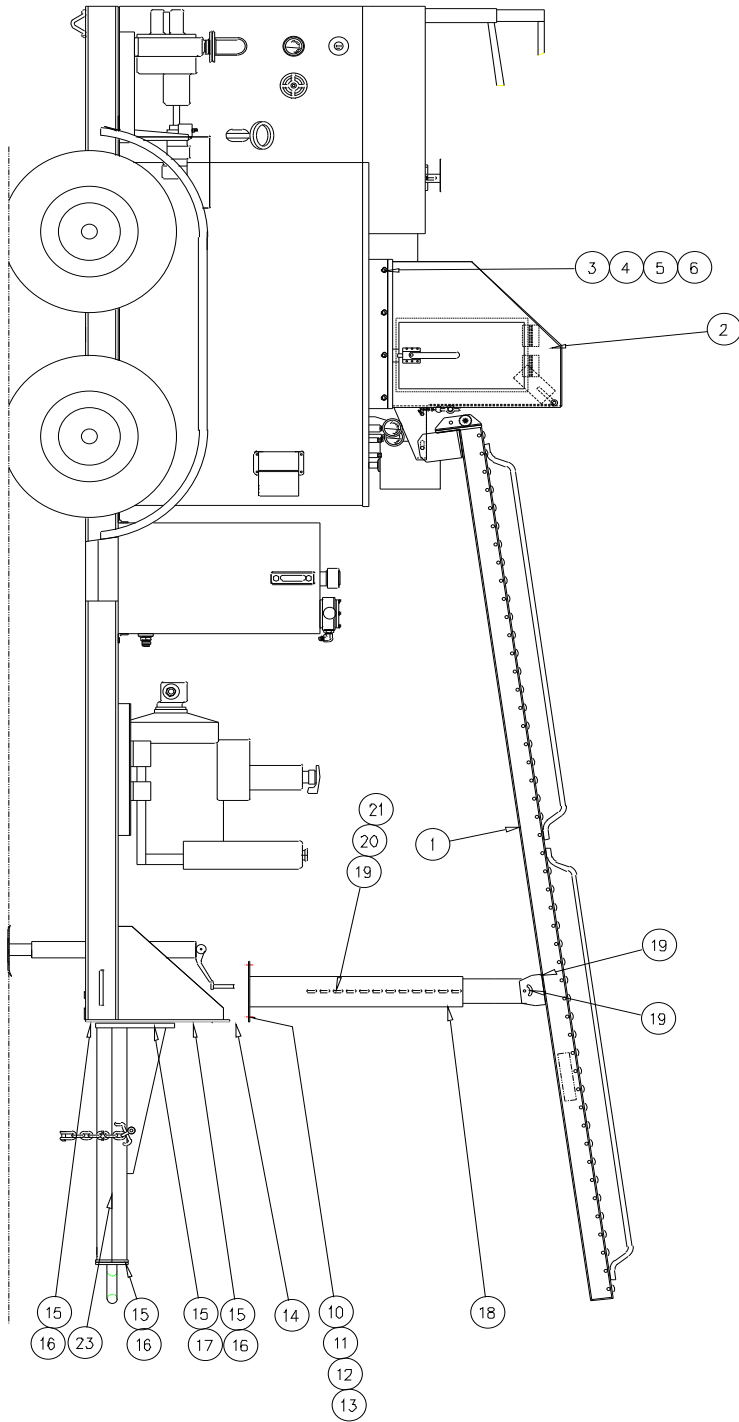
**EZ POUR 400 WITH ENGINE COVER-PART NUMBER 51250
NEW STYLE**



**EZ POUR 400 WITH ENGINE COVER-PART NUMBER 51250
NEW STYLE**

ITEM	PART NUMBER	QTY	DESCRIPTION
1	AX6-6FJ-6FJ-130	2	3/8" X 130" HYDRAULIC HOSE
2	26073	12	BLACK WIRE TIE
3	40013	1	EXISTING HOSE
4	29872	1	ADAPTER
5	32017	3	COVERED CLAMP
6	51145	1	HYDRAULIC VALVE
7	28500	4	1/4"-20 HEX NUT
8	28645	6	LOCKWASHER
9	28670	4	1/4" FLAT WASHER
10	28973	4	1/4"-20 X 2-1/2" SOCKET HD SCREW
11	28964	4	1/4"-20 X 3-1/2" SOCKET HD SCREW
12	51278	1	PLATE FENDER TOP
13	AX6-6FJ-6FJ-18	1	HYDRAULIC HOSE ASSY. 3/8" X 18"
14	28986	3	#10 SELF TAPPING SCREW
15	28606	2	1/16" INSERT
16	28701	2	1/14"-20 X 3/4 BOLT HEX HEAD
17	39608	1	SAFETY SWITCH
18	39609	1	SAFETY SWITCH CAP
19	43659	1	SWITCH BRACKET
20	43658	1	LID BRACKET

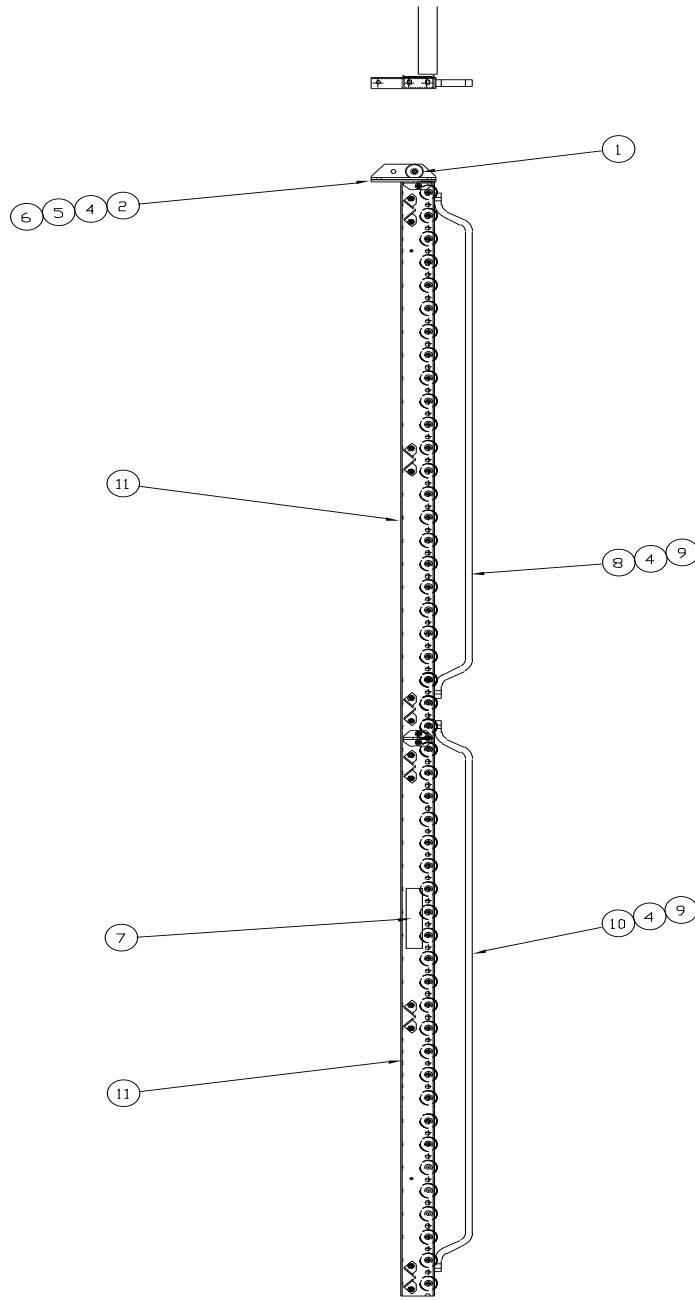
**EZ POUR 200 DIESEL (41800)--GRAVITY FEED--CONVEYOR KIT
PART NUMBER 51195**



**EZ POUR 200 DIESEL (41800)--GRAVITY FEED--CONVEYOR KIT
PART NUMBER 51195**

ITEM	PART NUMBER	QTY.	DESCRIPTION
1	51196	1	CONVEYOR ASSY-GRAVITY FEED
2	51260	1	SPLASH BOX ASSEMBLY
3	28502	10	3/8"-16 HEX NUT
4	28647	10	3/8" LOCKWASHER
5	28672	20	3/8" FLAT WASHER
6	28732	10	3/8"-16 NC X 1-1/4" BOLT
7	51163	1	SPRING-CLIP HOLDER
8	28986	1	#10 SELF TAPPING SCREW
9	51112	1	SHORT SUPPORT
10	28504	8	1/2"-13 NC HEX NUT
11	28649	8	1/2" LOCKWASHER
12	28674	16	1/2" FLAT WASHER
13	28762	8	1/2"-13 NC X 1-1/4" BOLT
14	51107	1	PINTLE PLATE
15	28529	16	5/8"-11 ESNA LOCK NUT
16	28972	10	5/8"-11 NC X 2" GRADE 8 BOLT
17	28781	6	5/8"-11 X 3" GRADE 8 BOLT
18	51114	1	FRONT SUPPORT
19	28526	30	3/8"-16 NYLON NUT
20	28672	10	3/8" FLAT WASHER
21	28732	10	3/8"-16 X 1-1/4" BOLT
22	28528	2	1/2"-13 NC NYLON NUT
23	20150	1	OPTION-HITCH EXTENSION-LONG
23	20140	1	OPTION-HITCH EXTENSION-SHORT

**EZ POUR 200 DIESEL (41800)--GRAVITY FEED--CONVEYOR ASSEMBLY
PART NUMBER 51196**



**EZ POUR 200 DIESEL (41800)--GRAVITY FEED--CONVEYOR ASSEMBLY
PART NUMBER 51196**

ITEM	PART NUMBER	QTY.	DESCRIPTION
1	51103	2	ROLLER
2	51141	1	CURB SIDE ROLLER BRACKET
3	51142	1	DRIVER SIDE ROLLER BRACKET
4	28526	12	3/8"-16 ESNA NUT
5	28672	8	3/8" FLAT WASHER
6	28731	4	3/8"-16 X 1" BOLT
7	26199	2	CRAFECO DECAL
8	51136	2	SHORT SIDE RAIL
9	28733	4	3/8"-16 X 1-1/2" BOLT
10	51137	2	LONG SIDE RAIL
11	51217	2	6ft. INT. CONVR SECTION-GRAVITY FEED

**Pioneering Leadership and
Innovation in Quality
Pavement Maintenance
Products.**



25527 South Arizona Ave • Chandler, Arizona 85248

480-655-8333 • 1-800-528-8242

Sales@Crafco.com

CustomerService@Crafco.com

Fax 480-655-1712

Copyright 2013 by Crafco, Inc.